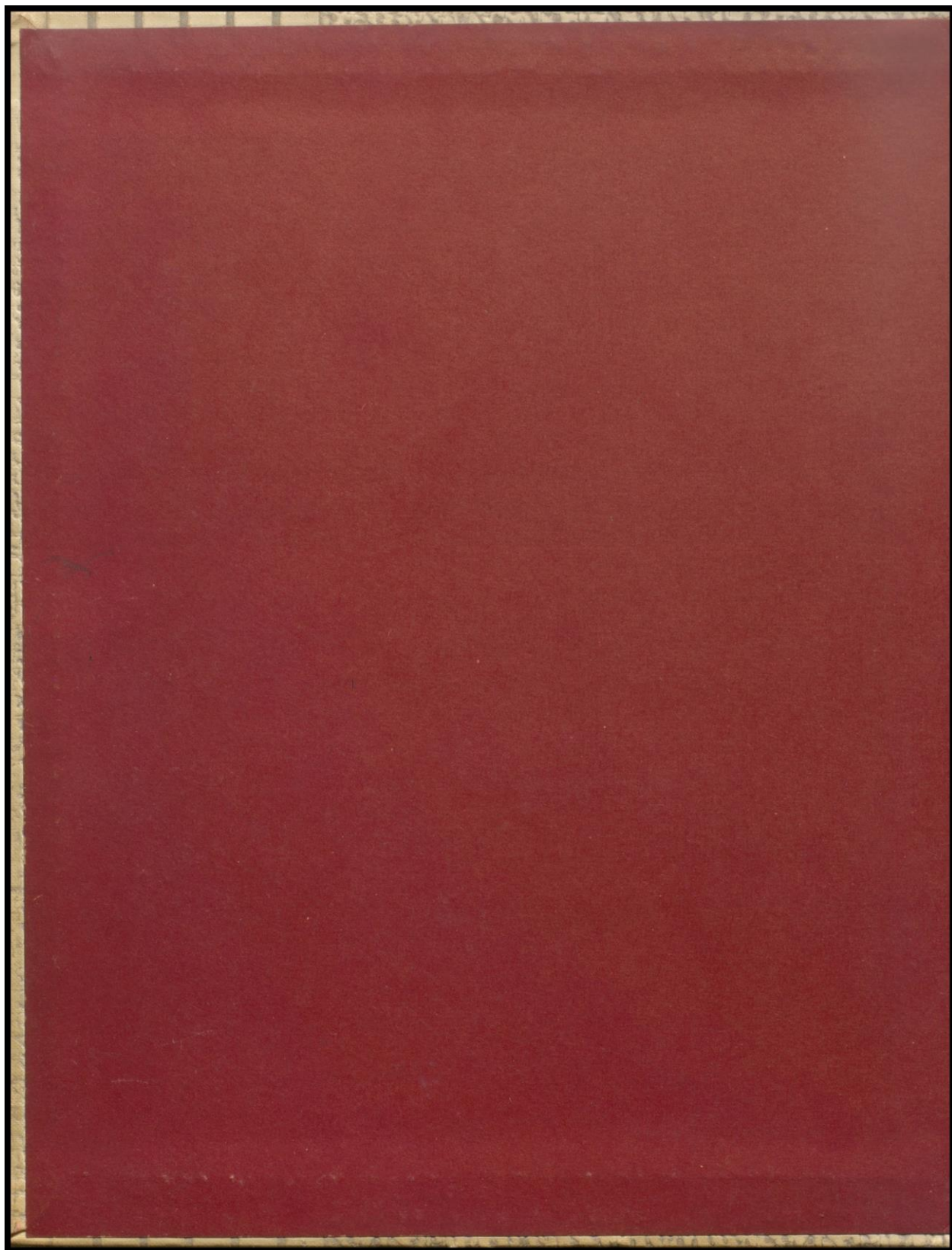
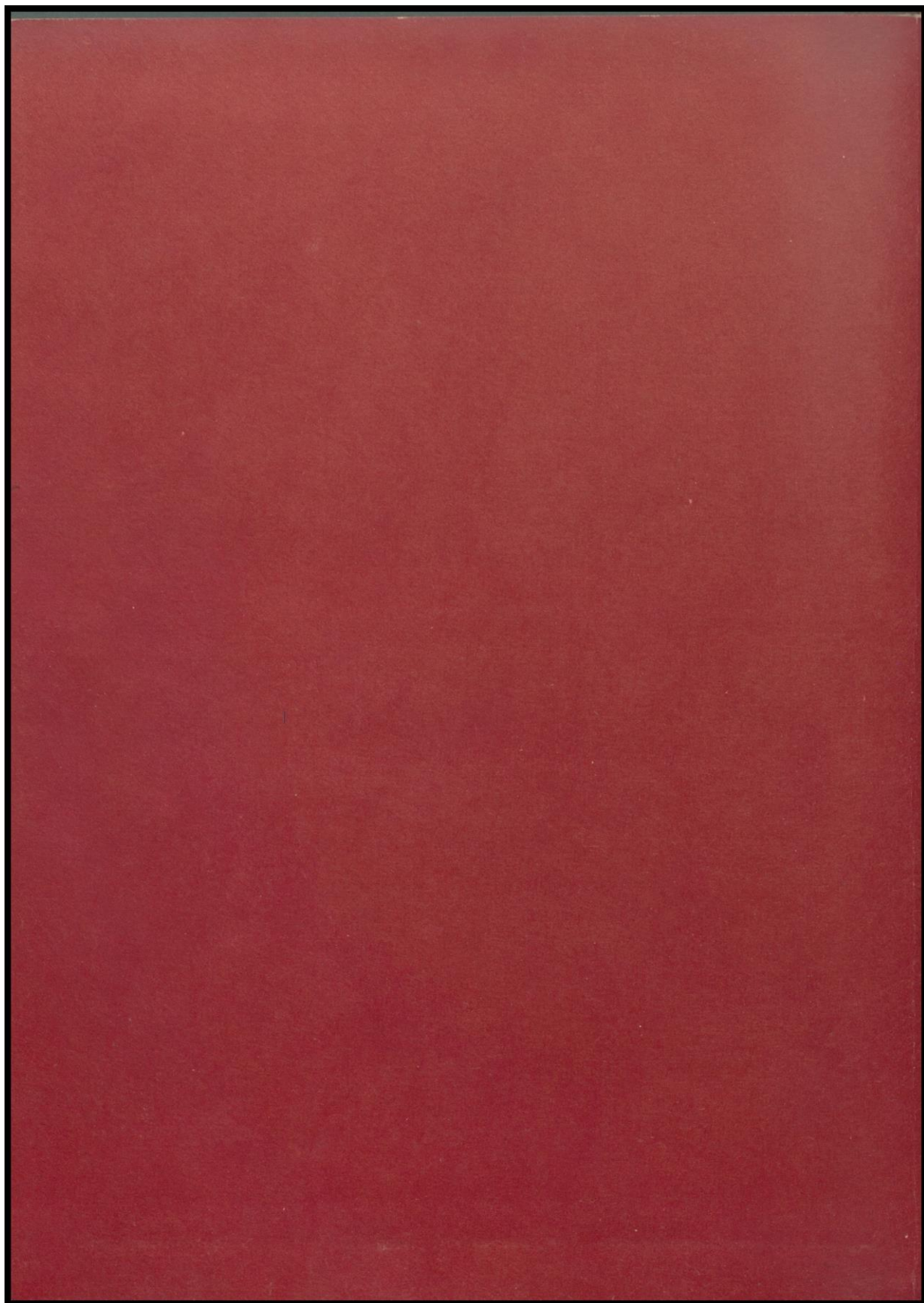


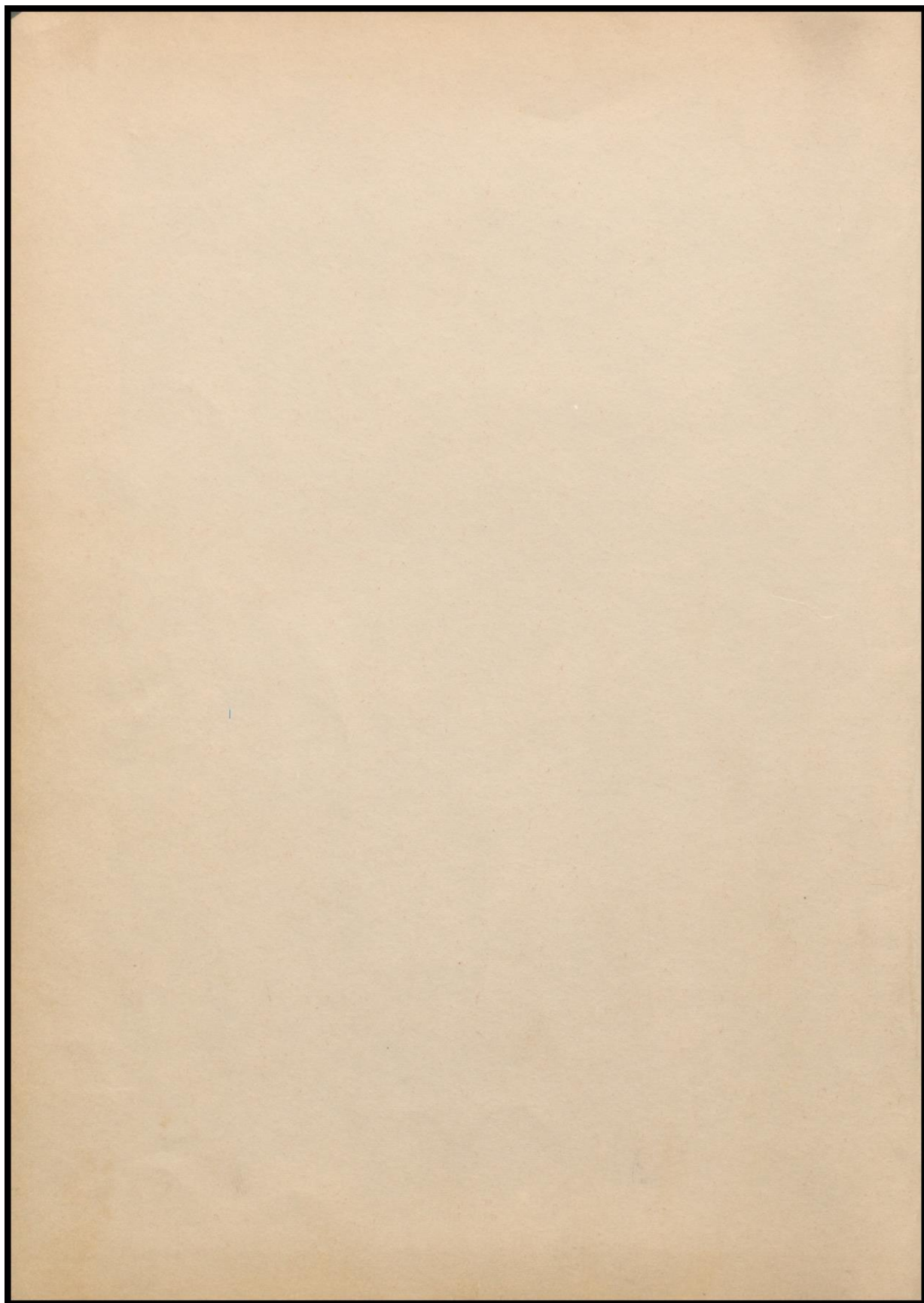


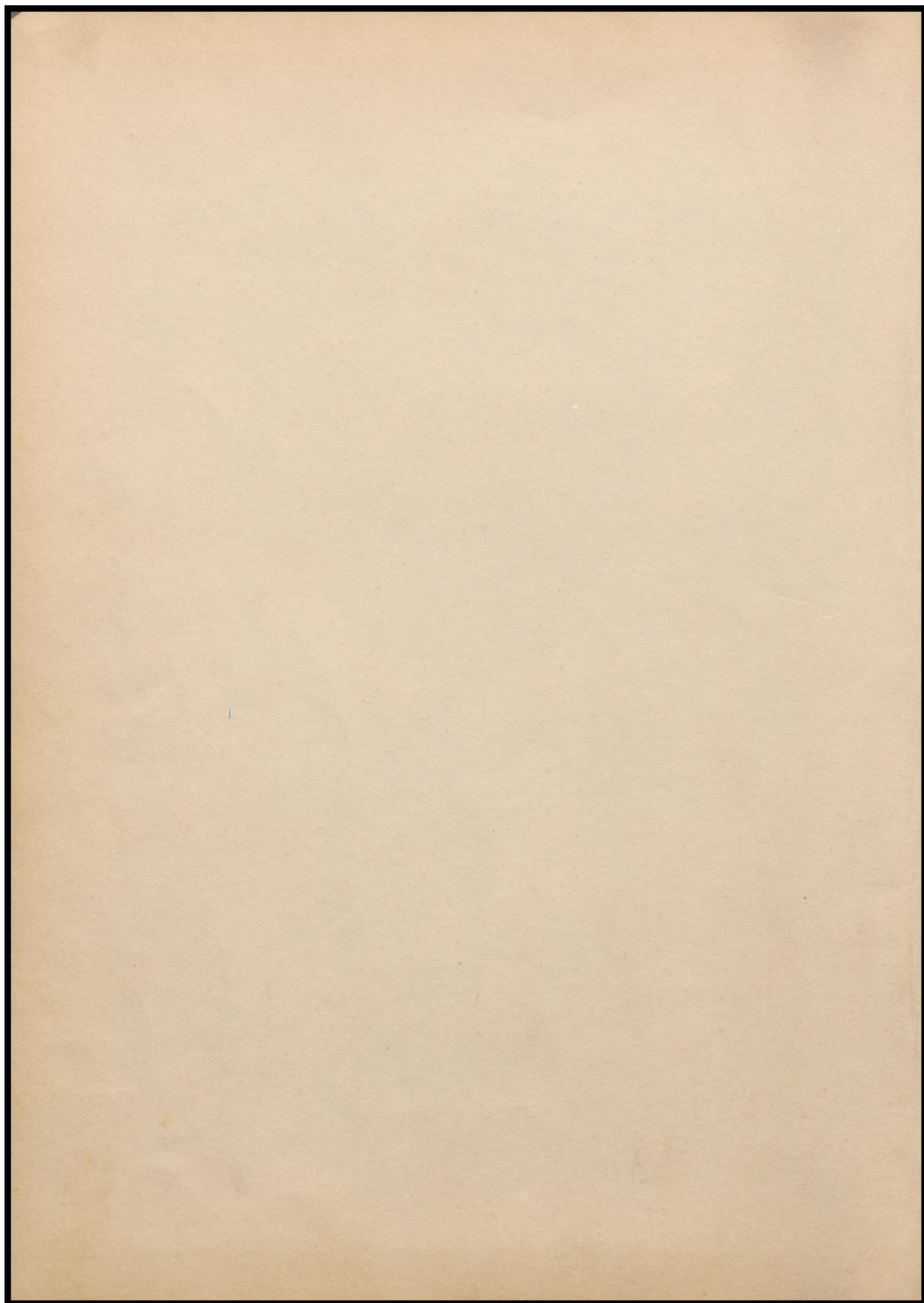
The

Mingo Chito '53









The doors of Yazoo High School have closed on another school year. We find that we are unable to resist taking a long, lingering look back over the events that have made this year so memorable and the people with whom we have enjoyed them.

Come with us, the staff of the Mingo Chito, as we make our tour of this school year. We sincerely hope that this is a sentimental journey that you will make often throughout the years as you open this yearbook, thumb through its pages and unlock the doors of your memories, which will allow you to relive this year of 1952-53 which you spent at YHS.

To this end we have worked to give you a faithful reproduction of the happenings of this year. As you reminisce over this annual, may it bring you the same glow of pleasure that you experienced during your wonderful school days.



Because of your merry heart, unflinching courage,
loyal devotion and unwavering faith in boys and
girls, we proudly dedicate this 1953 edition of
the MINGO CHITO.



Mrs. Eleanor Lester

Annual Staff

Editor



JIMMY NEELD

Business Manager



MIRIAM HENDRIX



SHERRY TERRELL SYLVIA KING
MIRIAM HENDRIX



JIMMIE GRIFFIS SIM LIDDON
MARSHA DUNN



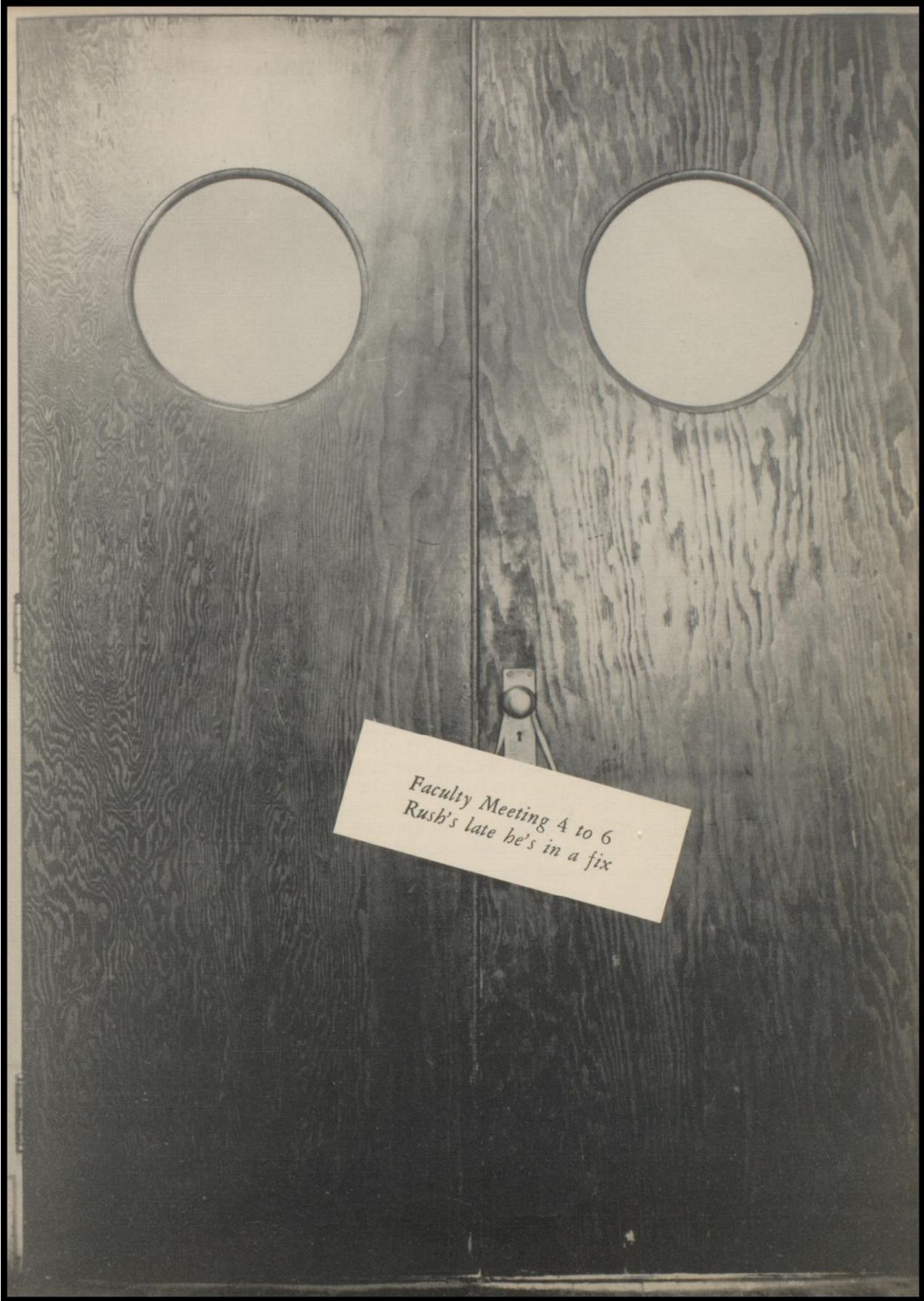
FLORA GREEN JIMMY NEELD
JOAN JACKSON



BILL HOLMES SHELBY LIGHTCAP
JACK DeCELL

Sponsors

MISS JO ANN PEGRAM MRS. J. P. SCOTT



*Faculty Meeting 4 to 6
Rush's late be's in a fix*



Superintendent's Message

YAZOO CITY PUBLIC SCHOOLS

F. W. YOUNG, SUPERINTENDENT

YAZOO CITY, MISSISSIPPI

"He who has a thousand friends has
not a friend to spare,
and he who has one enemy will
meet him everywhere."

Ali Ben Abu Taleb

Congratulations to the Senior Class for the fine yearbook you are publishing this year! Its high standards are in keeping with what we expect from you.

You have acquired technical information and developed work habits, ideals, attitudes, and concepts of thought and behavior which will enable you to earn a livelihood and live happily in a Christian culture. An important factor that will largely determine your success or failure will be your ability to get along harmoniously with your fellow man. Staunch, loyal friends will be the greatest treasures that you can lay up for the future. An enemy, even though acquired unconsciously by some thoughtless act, will rise to plague you when you are most unprepared to meet him.

May I commend the application of the following "FOUR-WAY TEST" to everything you say and you do, in your relations with others in your home, community, business, and social life:

1. Is it the Truth?
2. Is it fair to all concerned?
3. Will it build good will
and better friendship?
4. Will it be beneficial to
all concerned?"

Rotary International

Fred W. Young

FRED W. YOUNG
Superintendent

Principal's Message



YAZOO CITY PUBLIC SCHOOLS

F. W. YOUNG, Superintendent

Office of High School Principal

W. L. MARSH, Principal

YAZOO CITY, MISSISSIPPI

Dear Students:

The 1952-53 annual staff and their sponsors have in this annual captured in a most pleasant and pleasing way the days of this school year.

They are to be commended and congratulated upon a job well done.

Your education is to prepare for life; life is competition. Success in life goes only to the man who competes successfully. A successful man is a man who goes out to win. There is no reward for the loser.

It is my desire to see each of you win in the game of life. May you prepare yourself as the opportunity is presented to you.

"All who have meditated on the art of governing mankind have been convinced that the fate of empires depends on the education of youth." Aristotle.

Sincerely,

Woodrow L. Marsh

WOODROW L. MARSH
Principal



MRS. J. W. PARKER
English



MISS MARGARET HESTER
Social Science, Basketball Coach



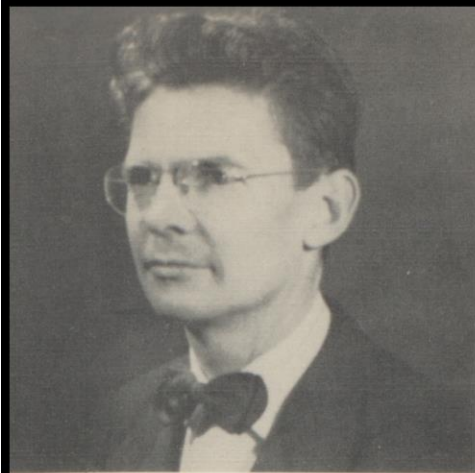
MRS. ORLEANE P. BOLIAN
Commercial Work

MISS SUDIE TOUCHSTONE
Junior High Mathematics



MRS. ELEANOR LESTER
Latin, Spanish, English





MR. STANLEY C. BEERS
Band Director



MISS ALICE MORGAN
Mathematics, Science



MRS. WARREN SMITH
Librarian, Dramatics Coach



MRS. R. H. FISACKERLY
Junior High English, Science



MR. HAROLD K. MOODY
Junior High Mathematics



MRS. ANN K. MORGAN
Social Science

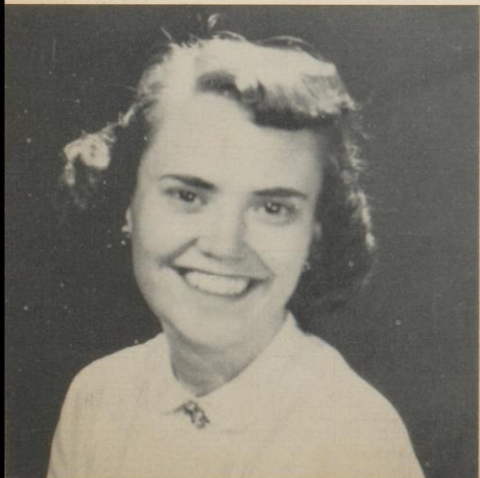


MISS JO ANN PEGRAM
English



MISS KATHRYN BALL
Mathematics

MISS SUSIE CRABB
Junior High English



MRS. J. P. SCOTT
Science





MR. W. S. RUSH
Diversified Occupations, Assistant Coach



MR. CRUIT BUCKLEY
Mathematics

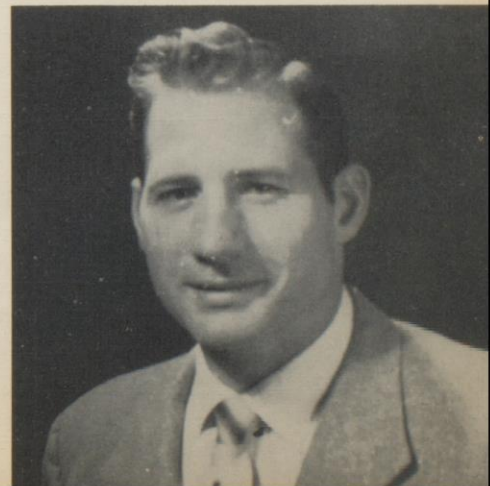
MISS KATHRYN MAXWELL
Choral Director

MISS MARY RONE
Home Economics



MR. HAROLD KELLY
Basketball Coach, Science, Athletic Director

MR. DOUGLAS HAMLEY
Football Coach, Physical Education, Science



Board of Education



DR. GILRUTH DARRINGTON



MR. H. T. BARRIER



MR. FRANK M. PATTY



MR. C. H. HENICK



MR. HUGH LOVE



*Four years of blood
Sweat and tears*

Senior Class Officers



BOBBY COLEMAN

SIM LIDDON

JOAN JACKSON

*Senior
Class
Favorites*

BOBBY
COLEMAN

JOAN
JACKSON



PAT BAGLEY

*A loving heart is the beginning
of all knowledge.*

Glee Club 3, 4; Mixed Glee
Club 3, 4; Girls' Sextet 4; Y-
Teens 3, 4.



HUNTER BARNWELL

*A sweet girl with an understand-
ing heart.*

Dramatic Club 1, 2, 4; Y-
Teens 1.

BILLY BERBRETTE

*Precious things come in small
packages.*

Hi-Y 1, 2, 3, 4; Sec.-Treas. 4;
Office Training 3; Band 1, 2, 3,
4; S Club 1, 2.



AVON BRADSHAW

*Reserved, yet friendly and pleas-
ant.*

4-H Club 1, 2, 3, 4; Hi-Y 3, 4;
Tide Club 4.

FLORA JEAN BUNNER

Her merry heart goes all day.

FHA 1, 2, 3, 4; Pres. 3, 4; Y-
Teens 1; Office Training Club
1; Tide Club 4; Pres. 4; Li-
brary Club 4.



BOBBIE ANN BURNS

*That which he fitted her was
cheerfulness and friendliness.*

Y-Teens 1, 2; Library Club 4;
Basketball 1, 2, 3, 4; FHA 1, 2,
3, 4; Reporter 3, 4.

MARTHA CARLEY

Blue were her eyes as the fairy flax.

Y-Teens 1, 2; Glee Club 1, 2, 3, 4; Secretarial Training Club 3; Tide Club 4; Sec.-Treas. 4; S Club 1, 2, 3, 4; Library Club 4.



JAMES CARPENTER

Onto every soul he pours delight.

Football 4; Boys' Glee Club 4.

JOHN CARPENTER

His smile is infectious.

Football 4; Basketball 4; Baseball 4; Boys' Glee Club 4; Y-Club 4.



HOWARD CLARDY

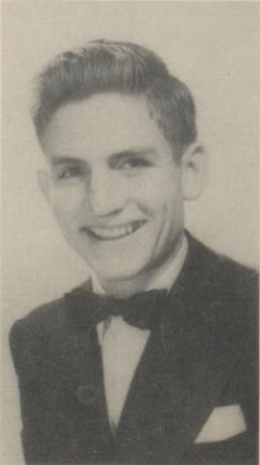
He's 'most to make a deacon swear.

4-H Club 1, 2; Hi-Y Club 1, 2, 3; Football 4; Dramatic Club 3; Boys' Glee Club 4; Mixed Glee Club 4; Press Club 4; Y-Club 4.

BOBBY COLEMAN

The heart to conceive, the understanding to direct, and the hand to execute.

Football 1, 2, 3, 4; Captain 4; Basketball 2, 3, 4; Baseball 2, 3, 4; Glee Club 1, 2, 3, 4; Hi-Y Club 3, 4; Y-Club 2, 3, 4; Class President 2; National Honorary Society 3, 4; National Athletic Scholarship Society 3, 4; Homeroom President 1, 2, 3, 4.



CLIFTON COLLINS

A mighty man is he.

Football 1, 2, 3, 4; Hi-Y Club 3, 4; 4-H Club 1, 2; Y-Club 3, 4.

MARION COODY

*Whatever happens I want to be
—Self-respecting and conscience
free.*

Football 1, 2, 3, 4; Basketball 1,
2, 3, 4; Track 2, 3; Hi-Y 1, 2;
Boys' Glee Club 1, 2, 3, 4; Mixed
Glee Club 1, 2, 4; Y-Club 4;
Band 1, 2, 3, 4; S Club 1, 2, 3, 4.



WILMA COPELAND

*Wearing all that weight of learn-
ing lightly like a flower.*

Dramatic Club 1; Y-Teens 1, 2;
Office Training Club 3, 4; Vice
President 4; Library Club 3, 4;
S Club 1, 2, 3, 4

JAMES COX

Cute and small and liked by all.

Hi-Y 3; Boys' Glee Club 4;
Mixed Glee Club 4; Football 4.



PRUDENCE DARRINGTON

*Quickly, lively, happy, and gay,
a smile for everyone who comes
her way.*

Band 1, 2, 3, 4; Dramatic Club
1; Y-Teens 1, 2, 3, 4; S Club 1,
2, 3, 4; Press Club 1, 2, 3, 4;
Glee Club 3, 4.

JACK DECELL

*And certainly he was a good
fellow.*

Dramatic Club 1, 2, 3, 4; Press
Club 1, 2, 3, 4; Editor 4; Annual
Staff 2, 3, 4; Band 1, 2, 3, 4;
Vice President 4; Homeroom of-
ficer 1; Student Council 1, 3, 4;
National Honor Society 3, 4;
Quill and Scroll 3, 4; S Club
1, 2, 3, 4.



FRANCES DISMUKE

*Always a thought that is big and
strong, a wish that is kind and
true.*

FHA 2, 4; Tide Club 4; Office
Training Club 3; Basketball 3.

KENNETH EDMONDSON

Be a live wire and you won't get stepped on.

Dramatic Club 1, 2, 3, 4; Band Clinic 1, 2, 3; Band 1, 2, 3, 4; Homeroom Vice President 2.



JAMES ELLIS

Men of few words are best.

4-H Club 1, 2, 3, 4; Hi-Y Club 4.

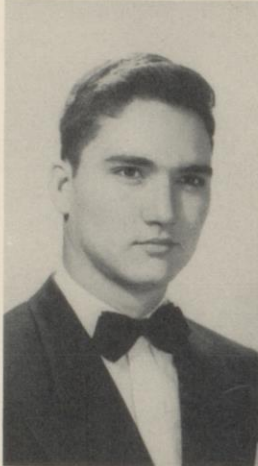


STANLEY EVANS

He was a man, take him for all and all.

I shall not look upon his like again.

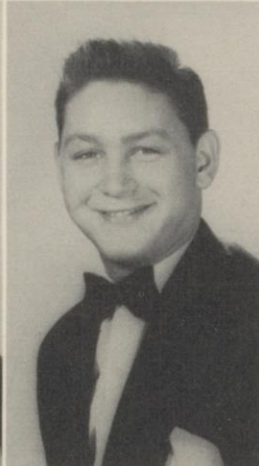
Hi-Y Club 1, 2, 3, 4; President 3; Boys' Glee Club 4; Mixed Glee Club 4; Football 1, 2, 3, 4; Y-Club 2, 3, 4; Sec. 4.



KENNETH FULLILOVE

Happy I am from care, I'm free, why ain't they all contented like me.

Hi-Y Club 1, 2, 3; Football 1, 2, 3, 4; Boys' Glee Club 4; Mixed Glee Club 4; Y-Club 3, 4.



FLORA GREEN

Here is friendship for everyone and gayness in ample portion.

Glee Club 4; Press Club 4.



NOEL GUTHRIE

He's tough, mam, tough.

Mixed Glee Club 1, 2, 3, 4; Sec.-Treas. 4; Boys' Glee Club 1, 2, 3, 4; Vice President 3; President 4; Football 2, 3, 4; Student Council 3; Sec.-Treas. 3; Y-Club 4; S Club 1, 2, 3, 4; Homeroom President 3; National Athletic Scholarship Society 2, 3, 4; Hi-Y Club 3, 4.



MIRIAM HENDRIX

The joy of youth and health her eyes display, and ease of heart, her every look conveys.

Mixed Chorus 3, 4; Girls' Glee Club 3; Dramatic Club, Sec-Treas. 2, 3; Press Club 2, 3, 4; Y-Teens 4; S Club 2; Mingo Chito Staff 2, 3, 4; Assistant Business Manager 3; Business Manager 4.



EVA ROSE HOPKINS

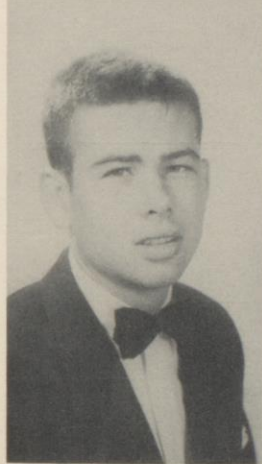
A bright smile and a winning personality.

Glee Club 1; Y-Teens 1, 2, 3; Dramatic Club 2, 3; Library Club 4; OTC 4; Basketball 1, 2, 3, 4; Track 1, 2, 3, 4; S Club 3.

JAMES HOLDERFIELD

He has what all men envy—quiet dignity and an ever friendly greeting.

Y-Club 3, 4; Hi-Y 2, 3; Baseball 3, 4; Football 4; Boys' Glee Club 4.



HAZEL HOUSTON

Knowledge is a treasure but practice is the key to it.

Y-Teens 1, 2; Girls' Glee Club 1, 3, 4; FHA 2, 3, Sec-Treas. 3; Library Club 3, 4; Basketball 2, 3, 4; S Club 1, 2.

JOAN JACKSON

She fairly sparkles with vim and has her active hand in every pie.

Y-Teens 2; Dramatic Club 3, 4; Vice President 4; Press Club 4; Annual Staff 4; Class Secretary 3, 4; Homeroom Secretary 2, 3; Homeroom Vice President 4; S Club 2, 3, 4; Cheerleader 3, 4; Girls' State 3; Football Maid 4.



A. P. KELLY

Forward and frolic, glee was there.

The will to do, the soul to dare.

Football 1, 2, 3, 4; Hi-Y 1, 2, 3; Mixed Glee Club 2, 3, 4; Boys' Glee Club 4; Y Club 3, 4; Basketball 1; Track 1, 3; Vice President Homeroom 1, 2, 3; Vice President of Class 2.

MARY LAWRENCE

Kindness is the sunshine in which every virtue grows.

Y-Teens 4; 4-H Club 1; Glee Club 4; Girls' Glee Club 4; Office Training Club 4.



SIM LIDDON

Since he is great he thinks no duty small.

Hi-Y 1, 2, President Hi-Y 2; Y Club 4; Press Club 1, 2, 4; Class President 4; Class Vice President 1; Homeroom President 1, 2, 4; Boys' Glee Club 4; Secretary-Treasurer Boys' Glee Club 4; Student Council Rep. 1, 4; Secretary-Treasurer Student Council 2; S Club 1, 2, 4; Football 1, 2, 4; Basketball 1, 2, 4; Track 1, 2, 4; Band 1, 2; Annual Staff 4; Nat. Ath. Schol. Soc. 2, 4.

JOE DANNY MARTIN

Never too busy to help another.

Hi-Y 1, 2; Boys' Glee Club 1, 2; Boys' 4-H 1, 2, 3, 4; Tide Club 4; Basketball 4.



ELIZABETH MILLER

And still we gazed and still the wonder grew, how one small head could carry all she knew.

Dramatic Club 1, 2, 3, 4; Library Club 1, 2, 3, 4; President 3, 4; Student Council 2, 3, 4; Homeroom Secretary 1, 2, 3, 4; S Club 1, 2, 3, 4; Assistant Librarian 2, 3, 4.

JIMMY NEELD

A man who bath music in his soul.

Band 1, 2, 3, 4; Press Club 1, 2, 3, 4; Flashlight Staff 1; Dramatic Club 1, 2, 3, 4; President Dramatic 4; Secretary Dramatic Club 2; Annual Staff 2, 3, 4; Assistant Editor Annual 3; Editor Annual 4; President Band 4; State Band Clinic 2, 4; All-State Band 2; Boys' Glee Club 4; Quill and Scroll 3, 4; Nat. Honor Soc. 3, 4; Student Conductor Band 3; Junior Rotarian 4; S Club 1, 2, 3, 4; Student Council 2, 3, 4.



JOEL NETHERLAND

Not what I am, but what I aspire to be.

4-H Club 1, 2, 3, 4; Vice President 3, 4; Boys' Glee Club 1, 2; Mixed Glee Club 1, 2; Tide Club 3, 4; Vice President 3; President 4.



FRANCES NEWTON

A heart of sunshine, a face full of smiles.

Y-Teens 1, 2, 3; FHA 1, 2, 4; Tide Club 4; Dramatic Club 3.



ESME JEAN NORTH

Not too sober, not too gay, very fine person in every way.

Mixed Glee Club 1, 4; Y-Teens 1, 2, 3, 4; Press Club 2, 3, 4; S Club 1, 2; Exchange Editor 4.



REX NOWLIN

Suppress me if you can, I am a merry jest.

Mixed Glee Club 2, 3, 4; Vice President 3; Boys' Glee Club 2, 3, 4; President 3, 4; Y-Club 2, 3, 4; President 4; Homeroom Vice President 4.



BILLIE PENNINGTON

It's nice to be natural when you're naturally nice.

Y-Teens 1; Girls' Glee Club 1, 2, 3, 4; Sextet 4; Library Club 2, 3, 4; Basketball 1.



JIMMY PETERMANN

Nowhere is so busy a man to be found.

4-H 1, 2, 3, 4; Tide Club 3, 4.



CELIA PLUNKETT

To know her is to love her.

Glee Club 1, 2, 3, 4; Secretary, Glee Club 4; Accompanist 4; Y-Teens 1, 2, 3, 4; Vice President 3; President 4; Band 2, 3, 4; Class Favorite 1; Homeroom Secretary 1, 2; Girls' State 4.



MERLE RICHARDS

A mighty spirit that fills her tiny frame.

Mixed Glee Club 1, 2; Girls' Glee Club 1, 2, 3; Dramatic Club 4; Office Training Club 3, 4; Secretary 3; President 4; Band 2, 3, 4; S Club 1, 2, 3.

ROY ROBY

His wealth is health and perfect peace.

Y Club 3, 4; Mixed Glee Club 4; Boys' Glee Club 3, 4; Football 3, 4; Basketball 3, 4; Track 3, 4; Dramatic Club 3, 4.



BETTY ROGERS

This world has angels all too few, and heaven is overflowing.

Mixed Glee Club, Vice President 4; Girls' Glee Club 1, 2, 3, 4; President 4; Girls' Octette 3; Y-Teens 1; Press Club 2, 3, 4; Associate Editor 4.

CAROL ROGERS

A jolly personality is her outstanding gift.

Dramatic Club 1, 4; Secretary 4; Press Club 2, 3, 4; Associate Editor 4; Y-Teens 1, 2, 3, 4; S Club 1, 2, 3, 4; Quill and Scroll 3, 4.



DONALD ROGERS

A merry heart and a cheerful countenance.

Mixed Glee Club 3, 4; Boys' Glee Club 3, 4; Office Training Club 3; Dramatic Club 4.

LINDA SALTER

So full of enjoyment and merriment.

Girls' Glee Club 4; Mixed Glee Club 3, 4; Press Club 4; Y-Teens 4; S Club 3, 4; Library Club 3; Dramatic Club 3.



LEROY SIMMONS

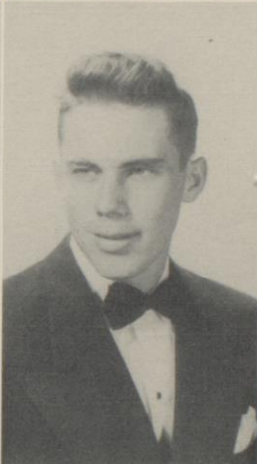
Speak no more of him—give me a bowl of wine.

Hi-Y 1, 2, 3, 4.

MARILYN SHAW

She is very wise I have no doubt.

Band 1, 2, 3, 4; All-State Orchestra 2, 3; Band Clinic 2, 3; Girls' Octette 2; Dramatic Club 4; Student Council 4; Vice President 4; S Club 1, 2, 3, 4.



DOUGLAS STAIN

The doors of success are waiting for you.

Hi-Y 1, 2, 3; Boys' Glee Club 4; Y Club 2, 3, 4; Football 2, 3, 4; Track 2.

BARBARA STRICKLIN

The most learned of the fair. Most fair of the learned.

Dramatic Club 1; Y-Teens 1, 2, 3, 4; Treasurer 4; S Club 1, 2, 3, 4; Glee Club 3; Basketball 1, 2, 3, 4; Track 3; Homeroom Secretary 2, 4; Homeroom Vice President 2, 3; Class Secretary 2; Cheerleader 3, 4; Press Club 4; Assistant Librarian 4.



WILLIAM STRICKLAND

Here mischief lurks in gay disguise.

4-H Club 1, 2; Secretary 2; Hi-Y 1, 2, 3; Boys' Glee Club 4.

RHETA TOMPKINS

I am wealthy in my friends.

Y-Teens 1; Dramatic Club 1, 2, 3; Library Club 2, 3, 4; OTC 4; S Club 1, 2, 3.



FRANCES UPCHURCH

Soft peace she brings wherever she arrives.

Tide Club 4; Y-Teens 1, 4; FHA 1, 2, 3, 4; OTC 3.

CHARLENE WALLER

A soul of power, a well of lofty thought.

Y-Teens 1, 2, 3, 4; Vice President 4; Dramatic Club 1, 2, 3, 4; Glee Club 4; S Club 1, 2, 3.



SHIRLEY WALNE

She moves like a goddess and she looks like a queen.

Mixed Glee Club 1, 4; Girls' Glee Club 1, 2; Dramatic Club 1, 3, 4; Sec. 3; Press Club 1, 3, 4, Sec. 4; Y-Teens 2, 4; Major-ette 3, 4; Head Drum Majorette 4; Who's Who 2, 3; Football Maid 2; S Club 2, 4.

HILDA WARREN

Thorns strike the sight, and merit wins the soul.

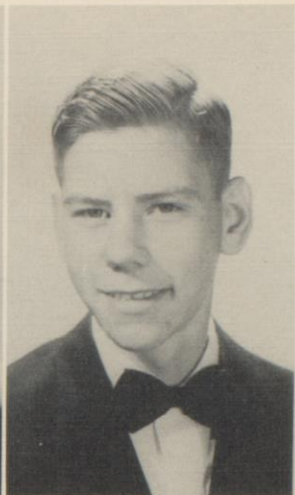
FHA 1, 2, 3, 4; Y-Teens 1, 2, 4; OTC 3; Tide Club 4.



MARY ELLEN WILLIAMS

A maid to whom was given so much of earth, so much of heaven.

FHA 1, 4; Y-Teens 2, 4; Tide Club 3, 4; Vice President 4; S Club 3.



WOOD

ZUMALT

The sweetest garland for the sweetest maid.

A finer boy is hard to find.

Hi-Y Club 4

Basketball 1, 4; Y-Teens 1;
Girls' Glee Club 1, 2, 3, 4;
Mixed Glee Club 1, 2, 3, 4;
OTC 3; Library 4.



WHO'S WHO

Junior Class Officers



MARSHA DUNN

"DOC" FULGHAM

PEGGY WILKINSON
Cheerleader, Football Maid

Junior Class Favorites

"DOC"
FULGHAM

"BITSY"
WILKINS





Alta Faye Adams
Henry Bonny
Carolyn Cline

Raymond Adams
Roger Broom
Joe Collins

M. J. Adcock
J. B. Brown
Fred Comola

Harold Alderman
Casey Cagle
Webb Comola

Martha Bennett
Jimmy Channell
Dawn Cooper



Glendyne Cox
Freddie Fletcher

Billy Faye Duncan
Hershel Fulcher

Marsha Dunn
James Fulgam

Griffin Dykes
Sue Grayson

Shirley Foster
Jimmy Griffis



Lawrence Guion
Barbara Hollowell
Bruce Johnston

Faye Harthcock
Jack Hogue
Gilruth Johnston

William Henson
Patsy Hutto
Ruth Kelly

Norman Higgins
Mary G. Ingram
Bobby Kennedy

David Holderfield
Hans Johnson
Marion Kerr



Robie Kight
Nettie Livingston

Sylvia King
Danny Lockett

George Kirk
Ruth Martin

Orville Lee
Paul McGinty

Shelby Lightcap
Mildred McMaster



James McMurtry
Mickey Moffet
Nancy New

Charlotte Middleton
James Mood
Ronnie Osborne

Dorothy Miller
Daphne Moody
Aubrey Overton

Sidney R. Miller
Dick Morgan
Bob Park

Jean Mobley
Charles Nelson
Dee Phillips



Jessie Pigg
Donald Roberts

Edward Poole
Jacklyn Roberts

Patsy Posey
Sandra Seward

Ida Marie Reeves
Doris Shackelford

John Reeves
Patty Shannon



Donnie Simpson
Virginia Trammell
Alvin Waller

Melba Sligh
Mary C. Upton
R. D. Warren III

Billy Stain
Eugene Van Cleave
Peggy Webb

Thomas Stricklin
Carolyn Vaughan
Bowman Weber

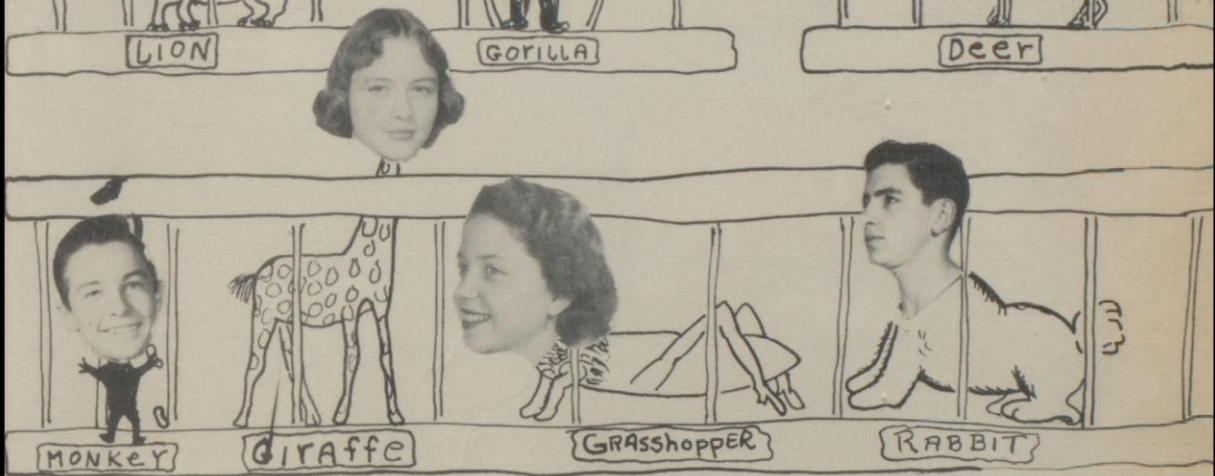
Morine Taylor
Charles Walker
Florence Werby



Charline Wester Jeannette Wilkins Wilette Wilkins

Lois Wilkinson Peggy Wilkinson Margaret Womble Beth York

The Ya-ZOO



Sophomore Class Officers



JIMMY BALL

MARIE CLARK

FRANK BRISTER

*Sophomore
Class
Favorites*

WALTER
HARRISON

MARIE
CLARK





Eric Adams
Myron Adams
D. D. Adcock
Jimmy Ball



John Barrack
Peggy Bentley
Floy Berberette
Frances Black



Wilma Blakemore
Ann Brister
Frank Brister
Doris Broom

Jessie Bryant
John Burns
Mary B. Campbell
John Carley



Lou Teta Carley
Marie Clark
Barbara Cline
Jimmy Coker



Dorothy Coleman
Herbert Collins
Ruth J. Cooksey
Edward Cowan





Elaine Craig
 David Cummings
 George Davis
 Elsie Dozier



Janiece Dykes
 Rochella Early
 Lillian Fanning
 Mary Belle Fowler



Howard Fulgham
 Janet Hancock
 Colin Lee Harrison
 Valorie Harrison

Walter Harrison
 Joe Hawk
 Carl Hinton
 Guy Hitt



Bill Holmes
 Will Holmes
 Nancy Hutto
 Hillary Ivers



Dolly Mae Johnson
 Murphy Johnson
 Gladys Jones
 Betty Sue Jones



Edward Loflin
 Ruby McCain
 Milton McMaster
 Garnett Melton



Betty Ann Miller
 Hardy North
 Edward Parker
 Jo Ann Pascal



Frank Patty
 Jean Peterman
 Billy Pettigrew
 Margaret Phillips



Hugh Pickett
 James Pierce
 Margueritte Powell
 Sanders Powell



Ann Richards
 James Roberts
 Frances Robertson
 Mary Grace Rogers



Betty Ross
 Dan Russell
 James Sanders
 Norman Scott



Foy Scroggins
Martha Shannon
Nancy Sherrard
Robert Sigrest



Gwen Simmons
Burley Smith
Ronnie Smith
Joe Stubblefield



Fredene Terrell
Barbara Tolbert
Bubber Trammell
Jewell Turner

Charles Ward
Joyce Westbrook
Dick Wilkerson



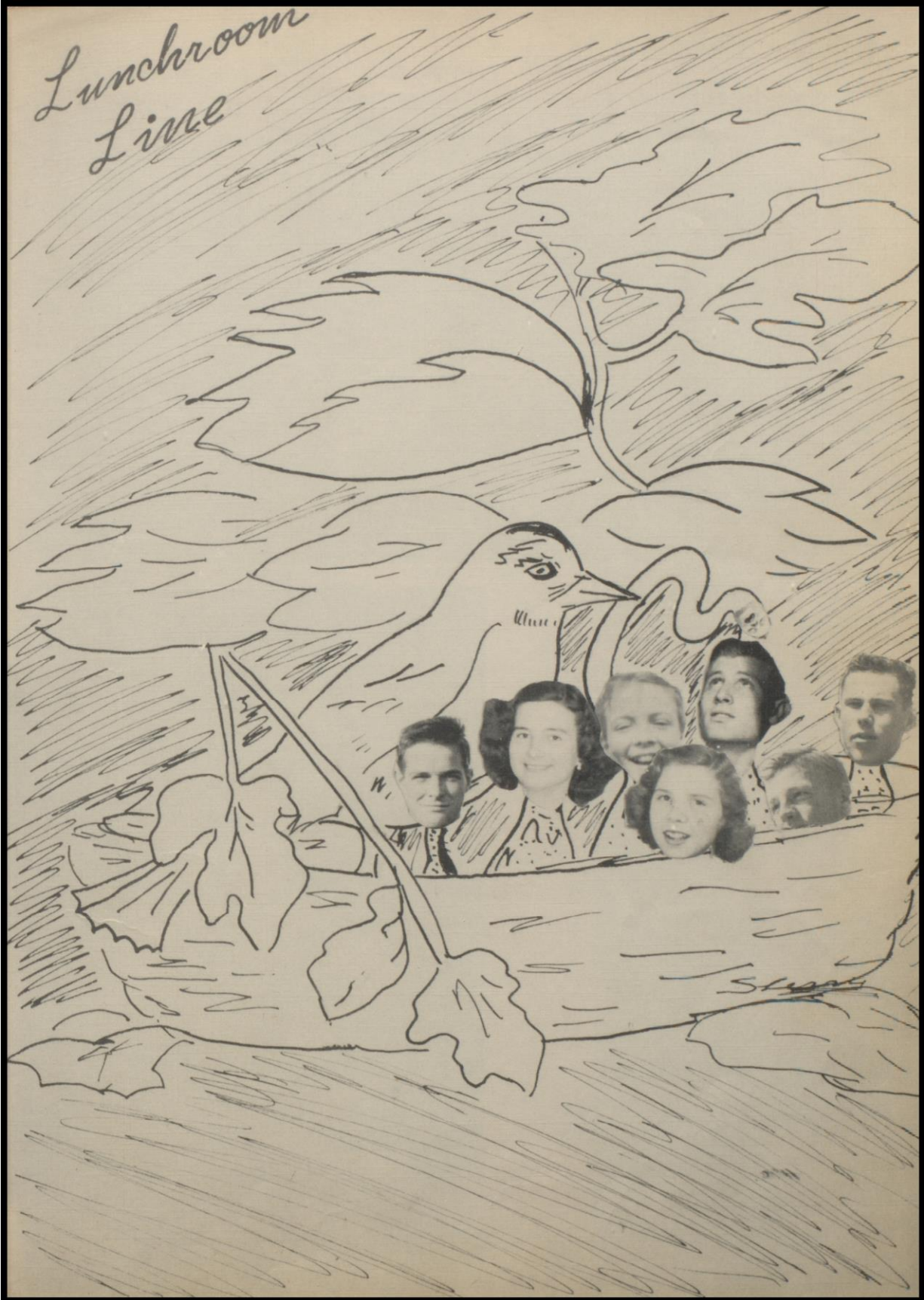
Pearl Williams
Shelby Jean Wiltcher



Neil Young
Patricia Young



Lunchroom
Line



Freshman Class Officers



TERRY STEMBRIDGE

SHERRY TERRELL

BILLY KENNEDY

*Freshman
Class
Favorites*

BILLY
KENNEDY

SHERRY
TERRELL





Frances Adcock
Buford Atkinson
Imogene Allen
Marilyn Beers



Annie Bradshaw
Barbara Buxtor
Phyllis Brieden
Ina Rae Carley



Bobby Chestnut
Lowell Croysdale
Bernice Christopher
Bill Davidson



Danny Dew
Richard Drake
Paul Dismuke
Leontine Duggan



Jack Duncan
Betty Farish
Jimmy Evans
Anne Fennell



Sidney Fletcher
Cobb Gibbs
Marvolene Fuller
George Gibbs





Barbara Hall
Johnny Henson
Billy Harrison
Billy Hickman



David Hogue
Linda Jenkins
Joyce Houston
George Johnston



Doris Jones
Camp King
Billy Kennedy
Lester Lee



Mamie Loper
Patricia Lungrin
Bobbie Lovette
Richard Mansfield



Nell Marquis
Charlene Maxwell
Lee Martin
Linda Middleton



Bobbie Mullins
Dwane McClure
Donna Mullins
Estelle McGinty





Carrie Nalley
George Nichols
Arthur Netherland
Betty Parker



Eva Pickle
Buddy Plunkett
Walton Pitts
Robert Pope



Elizabeth Porter
Larry Rothchild
Pansy Posey
Bobby Russell



Bennie Savell
Mary Savell
Estelle Savell
Floyce Scroggins



Nancy Shackleford
Nan Simmons
Thomas Shipp
Kay Spell



Kenneth Stephens
Terry Stembridge
Patricia Stevens
Mary Stewart





Billie Taylor
Sherry Terrell
William Taylor
Phyllis Tolbert



James Upchurch
Lane Ward
Joyce Walne
Jason Watkins



Jimmy Westbrook
Jerry Wheeler
Doyle Wester
Betty Wilkinson



Jo Ann Wilson



Irene Williams

Janet Wood

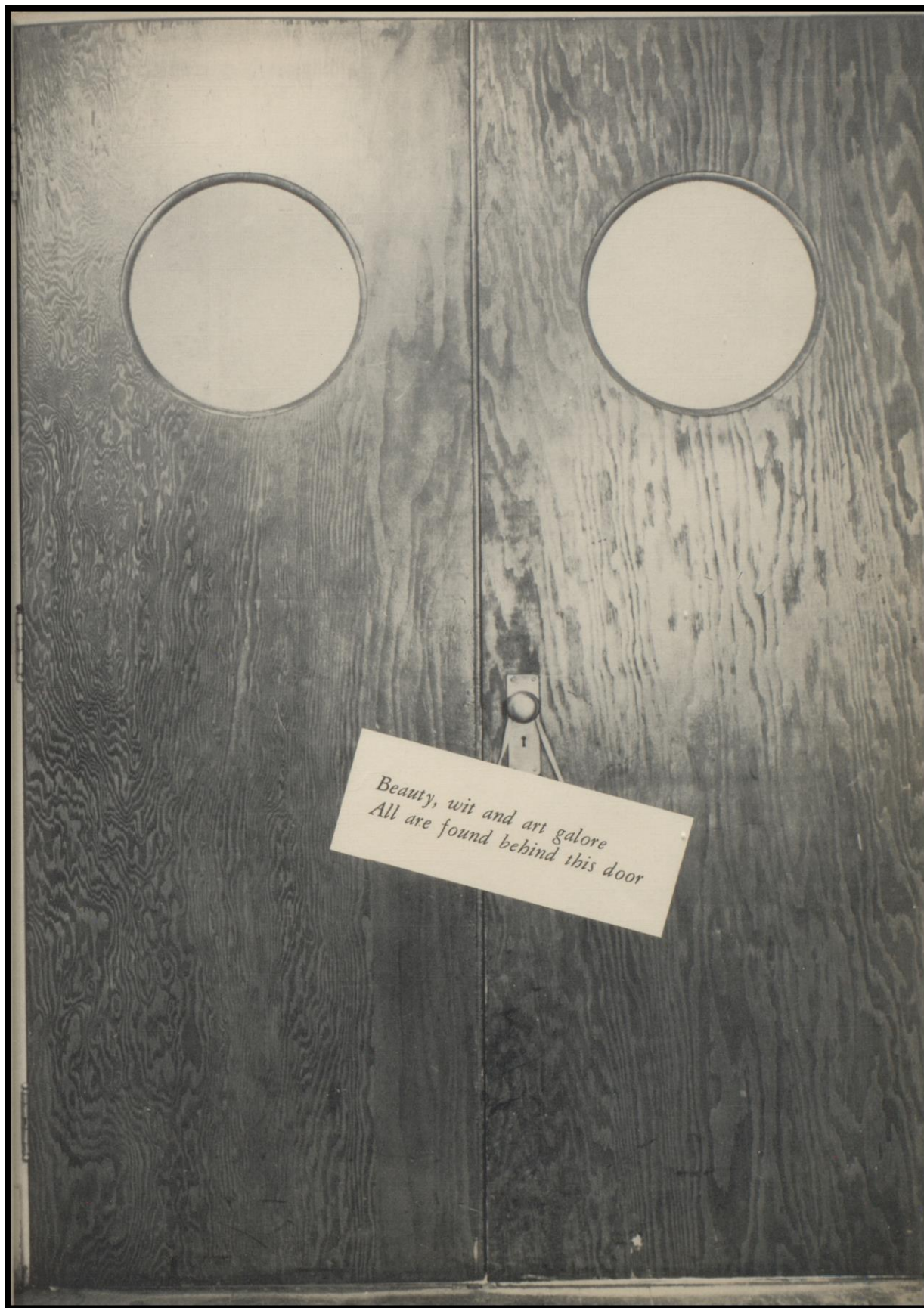


Jean Woodard

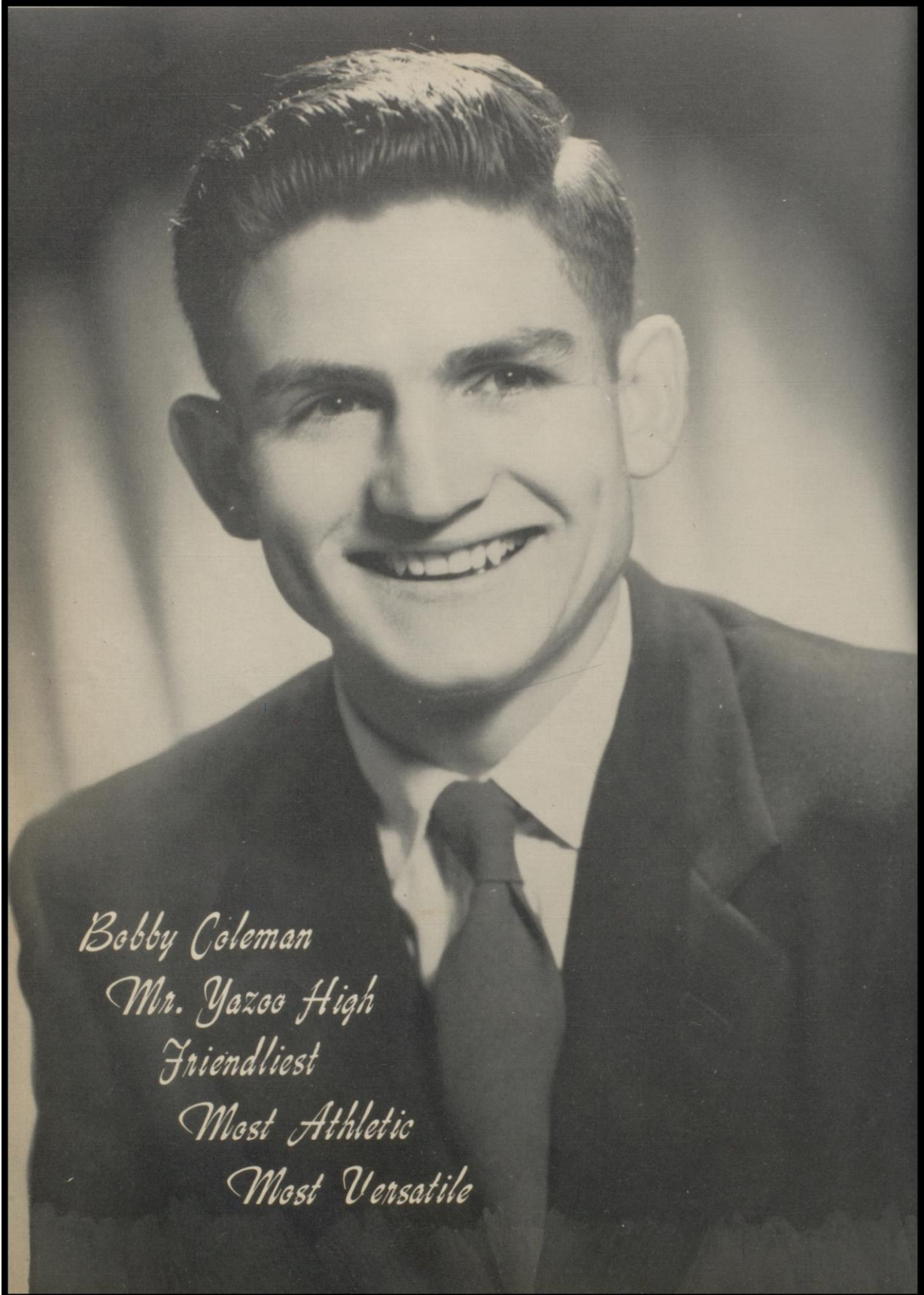
Dorothy Wyldman



Zoe Esta Young



*Beauty, wit and art galore
All are found behind this door*



Bobby Coleman

Mr. Yazoo High

Friendliest

Most Athletic

Most Versatile



Joan Jackson
Miss Yazoo High
Friendliest
Football Maid
Cheer Leader



*Marie Clark
Most Beautiful
Football Maid*

Beauties



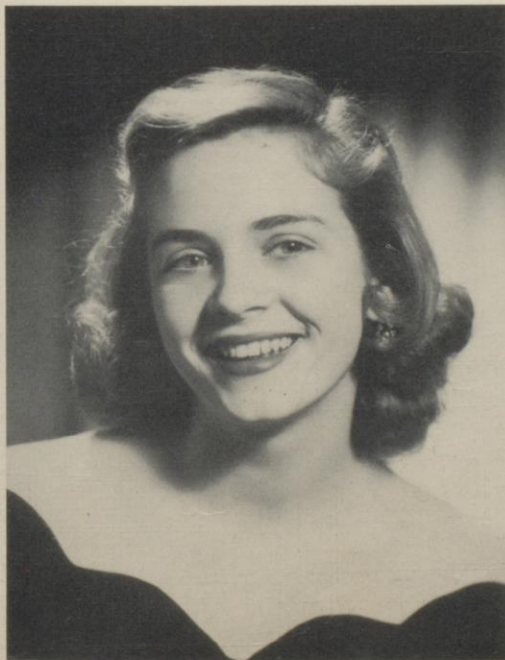
BETTY CAROL FARRISH

Football Maid



BARBARA ANN STRICKLIN

JOYCE WALNE



SHIRLEY WALNE

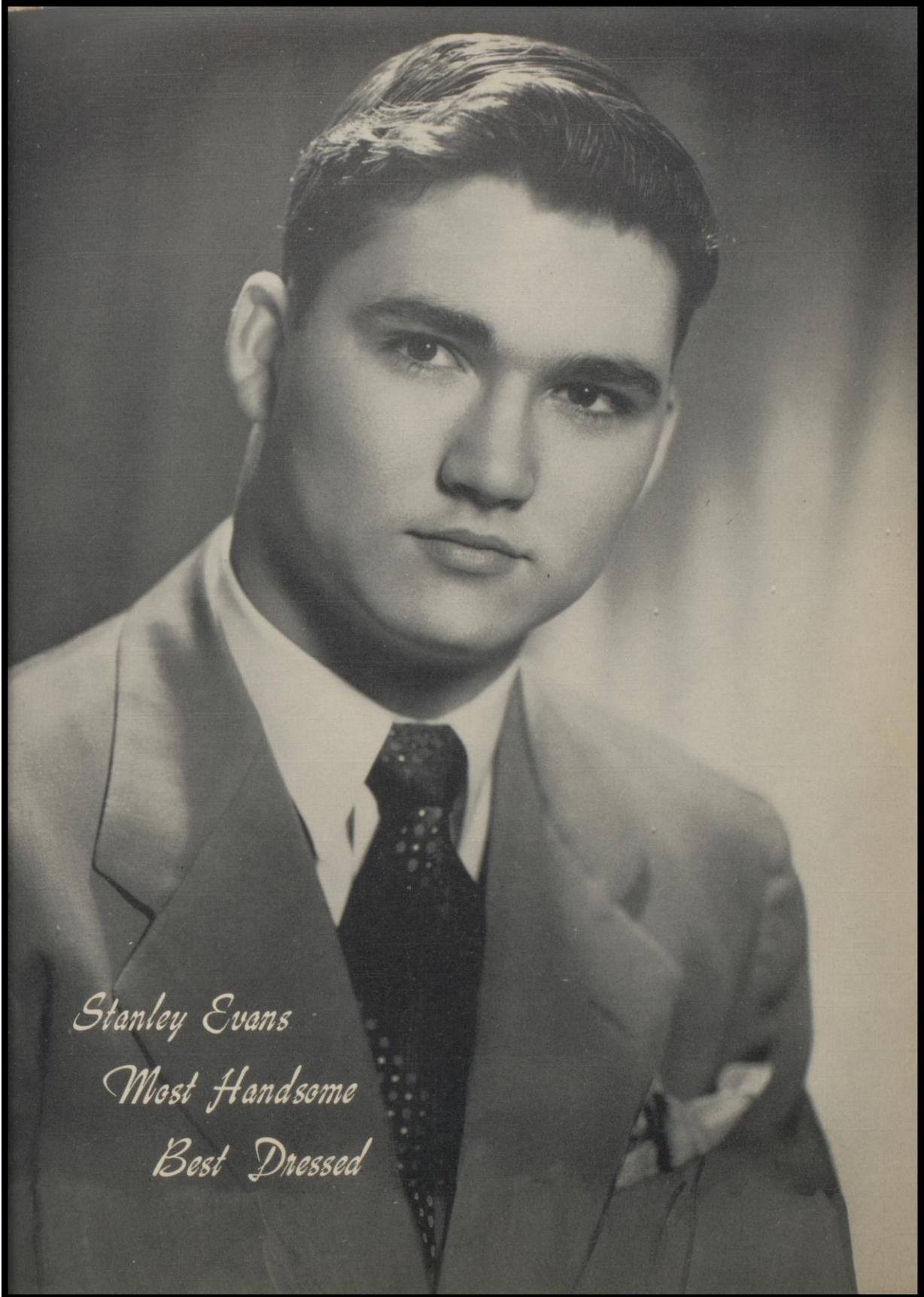




Marilyn Shaw

Most Intellectual

Most Likely To Succeed



Stanley Evans
Most Handsome
Best Dressed



*Barbara Stricklin
Most Athletic
Most Versatile
Beauty
Cheer Leader*

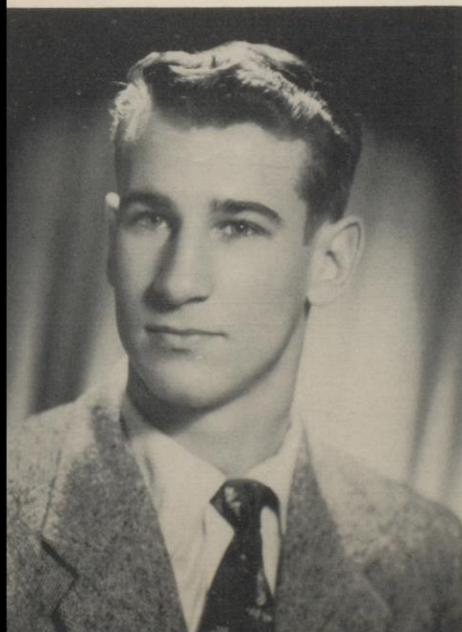
JACK
DeCELL

- *Most
Intellectual
Boy*



BETTY
LOY
ROGERS

- *Friendliest
Girl*



SIM
LIDDON

- *Senior Boy
Most Likely
to Succeed*

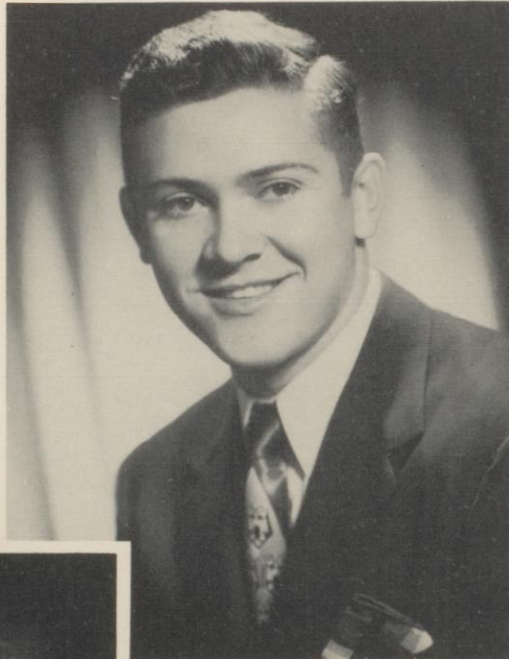
MARSHA
DUNN

- *Wittiest
Girl*



REX
NOWLIN

- *Wittiest
Boy*



FLORA
GREEN

- *Best Dressed Girl*

Football Queen



Bobby Coleman



Marilyn Shaw



Betty Lou Rogers



Jack DeCell



Barbara Stricklin



Jimmy Neeld



Joan Jackson



Noel Guthrie



Sim Liddon

National Honor Society

The purpose of this organization is to exalt scholarship, character, leadership, and service. Its members aim to hold before the school such motives as shall induce others to aspire to scholarly habits, enlisting in worthy service and leading forward in all things that shall advance the welfare of the school.



Jeanette Wilkins



Bowman Weber



Marsha Dunn



Jack Hogue



Henry Bonney



Joan Jackson



Miriam Hendrix



Sim Liddon



Marsha Dunn



Shelby Lightcap



Hunter Barnwell



Marilyn Shaw



Esme Jean North



Betty Lou Rogers



Carol Gaye Rogers



Shirley Walne



Jack Hogue

Quill and Scroll

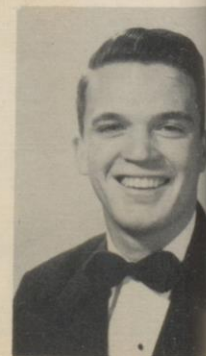
The Sue W. Mott Chapter of Quill and Scroll, the International Honorary Society for High School Journalists, has as its purpose the encouraging and rewarding individual achievement in journalism and allied fields.

Mingo Chito candidates recommended by Miss Jo Ann Pegram and Mrs. J. P. Scott, Sponsors are: Jimmy Neeld, Joan Jackson, Miriam Hendrix, Sim Liddon, Marsha Dunn, and Shelby Lightcap.

Flashlight Candidates recommended by Mrs. J. W. Parker, Sponsor are: Jack DeCell, Hunter Barnwell, Sim Liddon, Marilyn Shaw, Esme Jean North, Betty Lou Rogers, Carol Gaye Rogers, Shirley Walne, Joan Jackson, and Jack Hogue.



Jack DeCell



Jimmy Neeld

Cheer Leaders

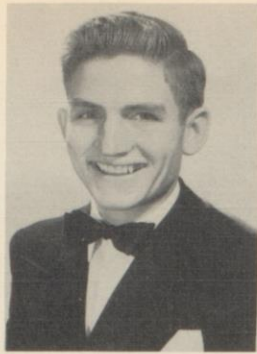


Zoe Young, Barbara Strickland, Peggy Wilkerson, Joan Jackson, Dawn Cooper.

Student Council



George Gibbs, James Roberts, Thomas Strickland, George Davis, Henry Bonney, Bitsy Wilkins, Marilyn Shaw, Jimmy Neeld, Sim Liddon, Elizabeth Miller, Barbara Coleman, Jack Decell, Robert Pope, Terry Stembridge, B. J. Barrier. Woodrow L. Marsh—*Sponsor*



Bobby Coleman



Noel Guthrie



Douglas Stain



Sim Liddon



Marion Coody



Henry Bonney



Bowman Weber



Jon Abner Reeves

National Athletic Scholarship Society

A branch of the National Athletic Scholastic Society was first organized in the Yazoo City School in 1945-46 for the purpose of encouraging better scholarship, better sportsmanship, and better citizenship. Boys are eligible who earn varsity letters in either major or minor sports, and whose scholarship for three consecutive semesters is equal to or above the average of the school, and who have exemplified the highest type of sportsmanship and citizenship.

1951-52

Bobby Coleman
Noel Guthrie
Douglas Stain
Sim Liddon

1952-53

Marion Coody
Henry Bonney
Bowman Weber
Jon Abner Reeves



ROY



MIRIAM



Bubby



LINDA



KELLY



EMSE WILLIAM



HUNTER



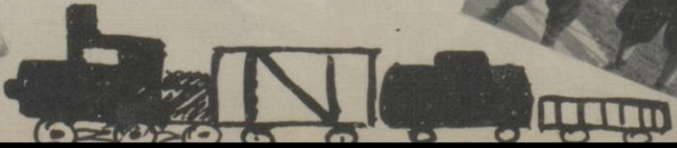
REX

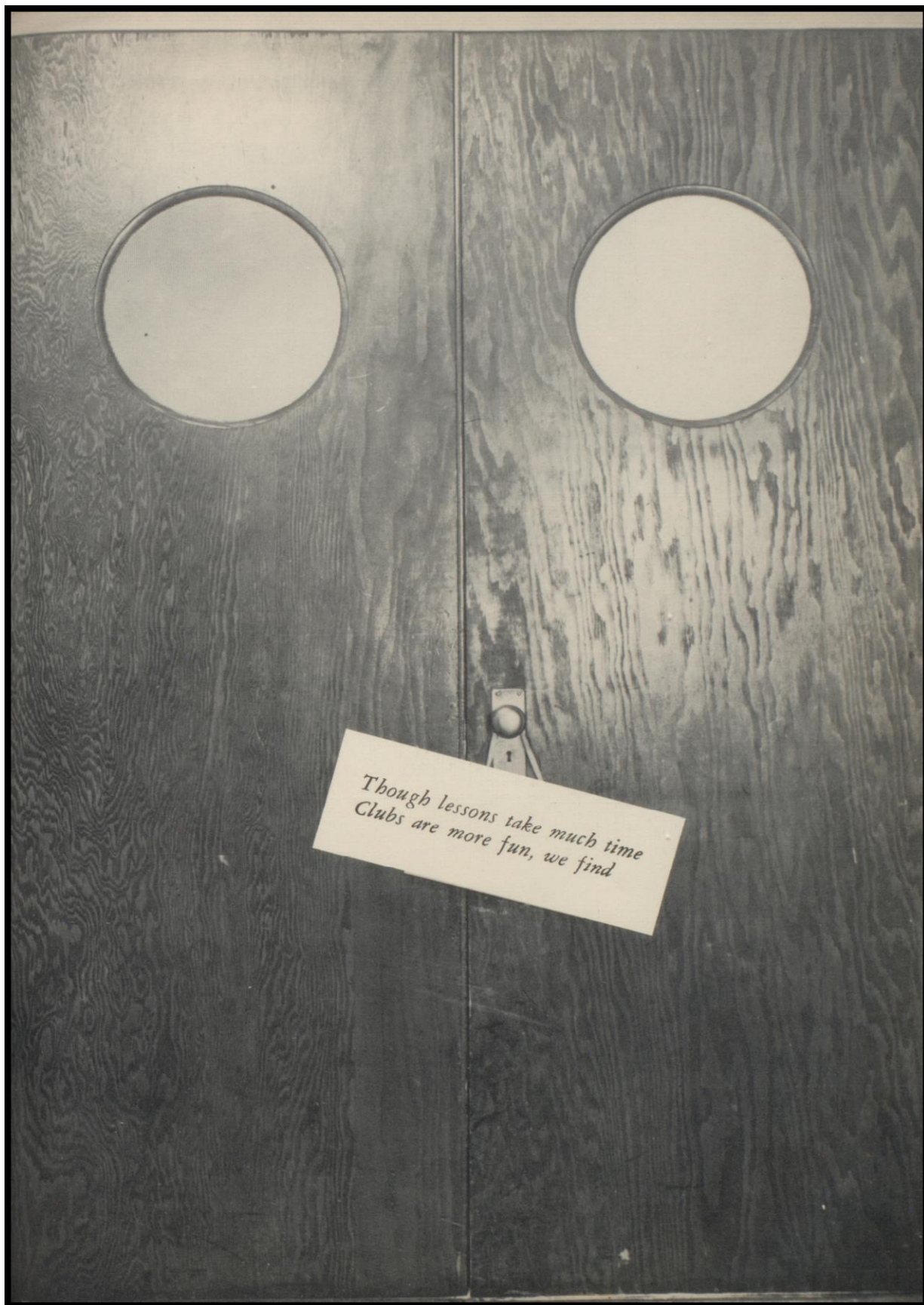


DONALD



ELIZABETH





*Though lessons take much time
Clubs are more fun, we find*

THE FLASHLIGHT

VOLUME XXV

YAZOO CITY

FEBRUARY 28, 1953

NUMBER 4

Seniors Begin Sales

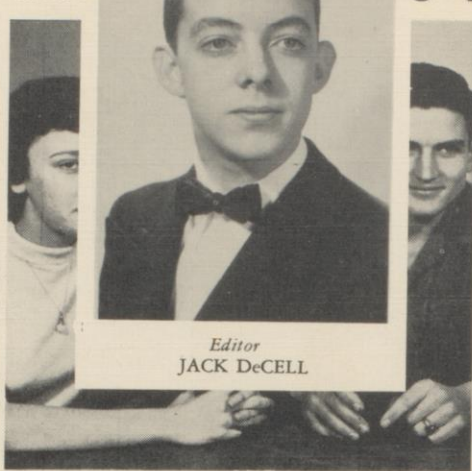
Mr and

o High YHS Anticipates

S O m n i a d i p i t t i C S n r t e o i e R w w t t



Business Manager
JACK HOGUE



Editor
JACK DeCELL



Assistant Editor
MARILYN SHAW

m its an as m, T-ay m iat to not ib-re-the sh. m-ese sen zoo ed nce the an

and Woman's Home Companion.

Successful In Past
The class of 1952 sold over \$1,000 worth of subscriptions and received about \$450 in commissions last year. A walnut plaque with a likeness of Benjamin Franklin in copper bas relief was awarded them for this outstanding achievement and now hangs in Miss Hester's home-room.

All students are urged to contact seniors if they know of anyone wanting a magazine subscription. Agents from several rival companies have already covered this area but it is not thought that they harmed many possibilities for this drive.

Last F 1953 'Who School w Although for week ties of th ified stat vious to Jimmy N go Chito, fair annt of cerer sketches | accompli | All pos

Coleman, Jackson Take Top Awards In Who's Who Contest

and Bitsy Wilkins, juniors; Marie Clark and Walter Harrison sophomores; and Billy Kennedy and Sherry Terrell, freshmen.

The Staff

<i>Editor-in-Chief</i>	JACK DeCELL
<i>Assistant Editor</i>	MARILYN SHAW
<i>Business Manager</i>	JACK HOGUE
<i>Co-Assistant-Editor</i>	CAROL ROGERS
<i>Co-Assistant-Editor</i>	BETTY LOU ROGERS
<i>Sports Editor</i>	JIMMIE GRIFFIS
<i>Ass't. Bus. Mgr.</i>	HUNTER BARNWELL
<i>Ass't. Bus. Mgr.</i>	SANDRA SEWARD
<i>Exchange Editor</i>	ESME NORTH
<i>Chief Typist</i>	JOAN JACKSON

Council Progresses
Student Council activities have progressed smoothly and an Intra-mural sports program is soon to get underway.

Christmas concerts were presented by the YHS band and Glee Clubs and other clubs have been extremely active this year.

Second Semester at YHS promises to be an eventful one including a concert by the Tulane University band this Spring and a basket-ball tournament in Feb. For a summary of the half-year see page 6.

Final Preparations For Annual Deadline In Feb.

Final preparations for the annual deadline of February 19 are being made by Jimmy Need and Miriam Hendrix, editor and business manager and the rest of the staff. Sixty pages of the 1953 edition of the *Mingo Chito* have already been sent to Taylor

Senator John Stennis who performs this duty for schools throughout Mississippi. Annual shape re Miriam needed have by

Most Versatile Boy—Bobby Coleman, Most Versatile Girl—Barbara Ann Stricklin; Most Intellectual Boy—Jack DeCell, Most Intellectual Girl—Marilyn Shaw; Best Dressed Boy—Stan-

Science is being offered again this year in Yazoo High School. The course is a requirement for graduation from YHS and is open to all students in the ninth grade and

Library Science Again At YHS

curriculum for several years. In past years it was taught by Miss Frances Oakley.

The purpose of this program is to acquaint students better with their library and enable them to use it more efficiently. Library Science extends two weeks beginning last Monday, Jan. 26 and extending through Friday, Feb. 6, including ten

Press Club



P B i Al at Pi ly ser gr Mi lej by dit Co pa "D "S so: 18

le se id — — th — it a- es id se n. W or y S. it er t. an rs ie 28 18

Junior-Senior Hi-Y



First row: O. Lee, J. Ellis, R. Hinds, D. Zumwalt, Leroy Simmons, A. Bradshaw D. Holderfield.
Second row: J. Reeves, E. Poole, R. D. Warren, J. Lee, R. Broome, B. Berberette, J. B. Brown,
Coach Rush. Third row: B. Stain, W. Comola, B. Park, E. Vanclive, L. Guion, J. Mood, A. Over-
ton. Fourth row: J. Pigg, M. Moffett, A. Waller, R. Osborne, C. Walker, J. Channell, D. Simpson.
Fifth row: Paul McGinty, G. Kirk, M. Kerr, "Bo" Collins, C. Nelson, F. Fletcher, "Casey"
Cagle, F. Comola.

Freshman-Sophomore Hi-Y



First row: J. B. Barrack, B. Atkinson, A. Netherland, G. Melton, T. Stembridge, J. Wheeler, J.
Upchurch, L. Tothchild, J. Duncan, K. Stevens, B. Kennedy, L. Croysdale, J. Ball, N. Young, W.
Shipp. Second row: G. Hitt, G. Johnson, H. Jennings, J. Coker, E. Adams, R. Pope, F. Brister,
E. Loflin, F. Scroggins, B. Parker, R. Mansfield, B. Plunkett, P. Dismuke, G. Nicholas, J. Bryant.
Third row: D. Wilkerson, H. Ivers, B. Russell, D. Russell, H. Fulgham, H. North, C. King, D.
Wester, B. Chestnut, F. Copeland, S. Fletcher, J. Roberts, T. Shipp, Mr. Buckley. Fourth row:
L. Martin, L. Lee, W. Pitts, R. Smith, J. Sanders, R. Drake, F. Patty, B. Harrison, B. Holmes,
W. Holmes, H. Pickett, B. Frazier. Fifth row: R. Sigrest, J. D. Akcock, C. Hinton, J. Stubblefield,
E. Cowan, J. Jenson, J. R. Pierce, B. Hickman, B. Pettigrew, B. Trammell.

Dramatic Club



First row: E. Miller, J. Jackson, M. Richards, J. Neeld, K. Edmondson, D. Cooper, H. Johnson.
Second row: S. Walne, C. Gay Rogers, D. Phillips, J. Channel, B. Sue Jones, C. Waller, Mrs. Smith.
Third row: M. Shaw, H. Barnwell, M. Bell Fowler, M. Geneva Ingram, B. Cline, B. Jo Ross,
B. Weber. Fourth row: B. Tolbert, P. Williams, J. Griffis, D. Coleman, W. Blakemore, D. Rogers,
S. Terrell, R. Roby.

Y-Club



First row: Coach Hameey, R. Nowlin, J. Holderfield, C. Walker, B. Kennedy, K. Fullilove, Coach
Kelly. Second row: D. Stain, B. Jonsston, J. Hogue, J. Collins, D. Lockett. Third row: H. Johnson,
C. Collins, N. Guthrie, D. Morgan, S. Liddon. Fourth row: S. Bonney, F. Fletcher, A. P. Kelly, J.
Fulgham, S. Powell, S. Evans, R. Roby.

Girls 4-H Club



First row: M. Lee Savell, B. Christopher, L. Dugan, B. Mullins, D. Wyman, J. Hancock, E. Pickle, J. Woodward, B. Wilkinson. Second row: C. Jean Nally, J. Wilson, B. Taylor, N. Hutto, B. Buxton, P. Bentley, F. Harthcock, B. York, P. Talbert. Third row: P. Shannon, B. Parker, P. Hutto, E. Porter, L. Ward, E. Savell, M. Fuller, F. Adcock, A. Bradshaw. Fourth row: P. Posey, M. Loper, J. Wood, P. Lungrin, M. Taylor, N. Shackelford, C. Wester, M. McMaster, P. Posey.

Boys 4-H Club



First row: Bobby Russell, Dan Russell, Danny Dew, David Cummings, George Davis, John Carley, Benny Sevell, Milton McMaster, Doyle Wester. Second row: John L. Burns, Charles Ward, Harold Alderson, Jesse Pigg, Gilruth Johnston, M. J. Adcock, Donald Roberts, Paul Dismuke. Third row: Jimmie Evans, Burley Smith, Paul McGinty, Griffin Dykes, Joel Netherland, Robie Kight, Joe Hawk.

Future Homemakers of America



First row: Irene Williams, Joan Wilson, Frances Upchurch, Frances Dismuke, Dorothy Wyldman, Betty Wilkerson, Mildred McMaster, Lane Ward, Eva Pickle, Phyllis Brieden. Second row: Jean Woodward, Frances Robertson, Ruth Martin, Elsie Dozier, Marguerette Powell, Anne Fennel, Charlene Wester, Jewel Turner. Third row: Janice Dykes, Barbara Hall, Doris Jones, Melba Sligh, Bobby Burns, Marveline Fuller, Lou Rita Carley, Miss Rone. Fourth row: Myron Adams, Bernice Christopher, Flora Bunner, Mary Ellen Williams, Estelle Savelle, Beth York.

Tide Club



First row: F. Upchurch, F. Dismuke, M. Womble, M. Carley, F. Bunner, R. D. Warren, M. H. Adcock. Second row: Mary E. Williams, R. Martin, G. Mobley, J. McMutry, R. Kight, J. Mood, D. Roberts. Third row: Coach Rush, P. McGinty, G. Johnston, H. Alderman, L. Guion, O. Lee, G. Dykes. Fourth row: C. Nelson, W. Henson, J. Peterman, R. Adams, E. Poole, J. Martin, A. Bradshaw, G. Kirk, J. Netherland.

Office Training Club



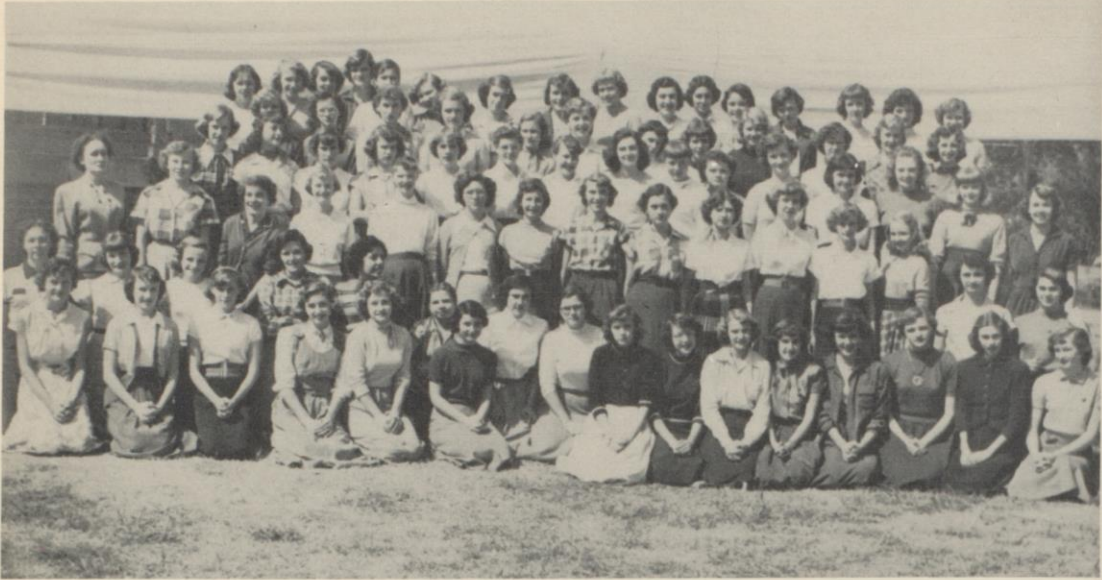
First row: Mary Virginia Cleveland, Dorothy Miller, Lois Wilkinson, Ruth Kelly, Mary Lawrence, Glendyne Cox. Second row: Patty Shannon, Eva Rose Hopkins, Rheta Tompkins, Virginia Trammel, Melba Sligh. Third row: Daphne Moody, Martha Bennett, Wilma Copeland, Shirley Foster, Jacklyn Roberts, Mrs. Bolian. Fourth row: Fay Harthcock, Sue Grayson, Carolyn Cline, Ida Marie Reeves.

Library Club

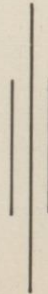


First row: Mary Grace Rogers, Shelby Wilcher, Floy Berberrette, Elizabeth Miller, Barbara Talbert, Rheta Tompkins, Hazel Houston, Billie Jo Pennington. Second row: Bobbie Burns, Eva Rose Hopkins, Jean Peterman, Ruth Kelly, Virginia Trammel, Mary Bet Cambell, Marie Clark. Third row: Bobbie Wood, Gwen Simmons, Mary Ingram, Wilma Copeland, Pat Young, Martha Carley, Flora Bunner, Mrs. Smith.

Y-Teens

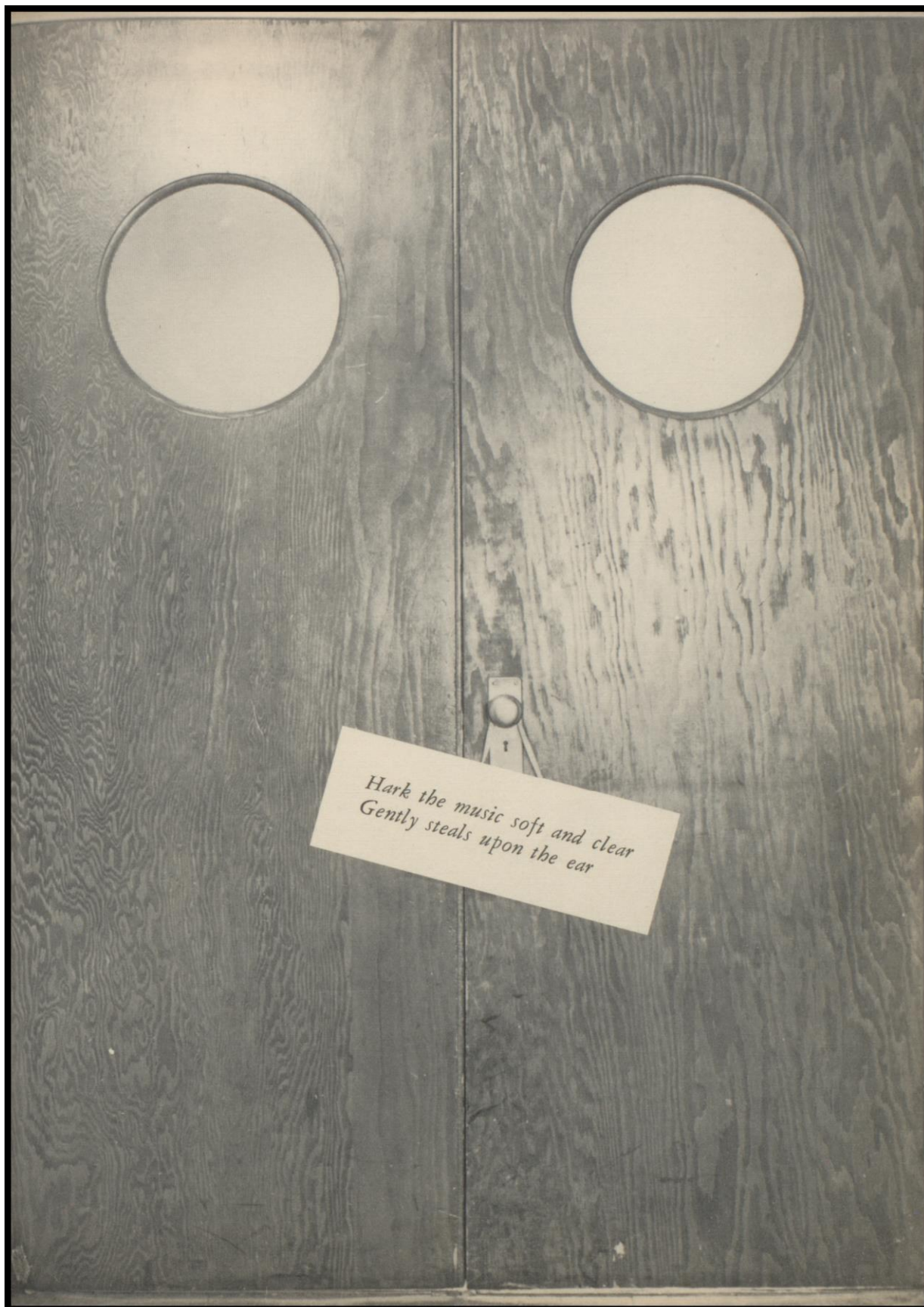


First row, left to right: Irene Williams, Dorothy Miller, Valerie Harris, Shirley Walne, Linda Salter, Bitsy Wilkins, Barbara Hollowell, Miriam Hendrix, Dee Phillips, Nettie Livingston, Melba Sligh, Celia Plunkett, Pat Bagley, Alta Fay Adams. Second row: Doris Jones, Patsy Copeland, Lillian Fanning, Biggie Wilkins, Florence Werby, Shelby Lightcap, Prudence Darrington, Marsha Dunn, Peggy Wilkinson, Barbara Stricklin. Third row: Mrs. Morgan, Nell Marquis, Fredine Terrell, Betty Ann Miller, Ann Richards, Barbara Hall, Dorothy Wyldman, Carolyn Cline, Glendyne Cox, Ida Marie Reeves, Joan Pascal, Doris Broom, Bernice Brister. Fourth row: Charlotte Middleton, Margaret Womble, Nancy New, Dolly Johnson, Ann Fennel, Joline Cooksey, Martha Shannon, Frances Black, Lou Rita Carley, Frances Upchurch, Mary Ellen Williams, Lane Ward, Jewell Turner, Joyce Houston, Miss Ball. Fifth row: Pearl Williams, Mary Belle Fowler, Marge Powell, Charlyen Waller, Gladys Jones, Estelle McGinty, Floyce Scroggins, Linda Lou Jenkins, Linda Bell Williams. Sixth row: Patricia Lungren, Leontine Duggan, Frances Adcock, Doris Shackelford, Sidney Miller, Mary Upton, Dorothy Coleman, Bille Duncan, Carol Rogers, Esme North, Nan Simmons, Ina Carley, Annie Bradshaw, Pansy Posey, Phylliss Tolbert.









*Hark the music soft and clear
Gently steals upon the ear*

Concert Band



Under the direction of Mr. Stanley C. Beers the Yazoo High School Band has brought state-wide recognition to Yazoo City. For many years the band has been compiling an enviable record in the state-wide contest held each year.

The concert band, composed of sixty-six members, present annually three concerts. In addition to these traditional performances many semi-formal and impromptu performances add much to the community and school life.

Creating a flurry of excitement in their new blue and gray uniform, the ninety-piece marching band sparked the football games this year with eleven halftime performances ending the year with a grand extravaganza at the big Thanksgiving Day game.

In answer to the demands of the community, the band has responded by leading many parades, climaxing with the big Christmas and March of Dimes parade.

Members of the Band

Jim Bagley
 Jimmy Ball
 Hunter Barnwell
 J. B. Barrack
 Sandra Bartley
 Billy Berberette
 Wilma Blakemore
 Alice Blailock
 Frank Brister
 J. B. Brown
 Jimmy Channell
 Dot Coleman
 Marion Coody
 Joline Cooksey
 Prudence Darrington
 Bill Davidson
 George Davis
 Jack DeCell
 Marion Dongieux
 Billie Faye Duncan
 Jack Duncan
 Kenneth Edmondson
 Jimmie Evans

Betty Farish
 Cobb Gibbs
 Jimmie Griffis
 Hillary Ivers
 Walter Harrison
 Love Henick
 Rosemary Hester
 Billy Hickman
 Norman Higgins
 Carol Hodges
 David Hogue
 Jack Hogue
 Bill Holmes
 Barbara Hollowell
 Betty Johnson
 Dolly Johnson
 Bruce Johnson
 Gladys Jones
 Linda Jones
 Ruth Kelly
 Linda Little
 Nettie Livingston

Bobbye F. Lovette
 Phyllis Mapes
 Charlene Maxwell
 Dwane McClure
 Georgia Middleton
 Malcolm Moody
 Gilbert Monell
 Johnnie Nesbitt
 Jimmie Neeld
 Hardy North
 Marilyn Orsborne
 Aubrey Overton
 Frank Patty
 Leon Paschal
 Dee Phillips
 Buddy Plunkett
 Celia Plunkett
 John Reeves
 Ann Richards
 Merle Richards
 Josephine Roby
 Betty Rogers

Carol Rogers
 Betty Jo Ross
 Roy Ruby
 Bobby Russell
 Foy Scroggins
 Sandra Seward
 Marilyn Shaw
 R. L. Sigrest
 Gwen Simmons
 Donnie Simpson
 Frances Stain
 Mary Stewart
 Mary Stubblefield
 Bootsie Terrell
 Virginia Trammell
 Mary Upton
 Gary Waller
 Shirley Walne
 Bubba Weber
 Biggie Wilkins
 Bitsy Wilkins
 Dickie Wilkerson



1952-1953 Marching Band



*Band
in
action*



Majorettes



SHIRLEY WALNE DEE PHILLIPS BETTY FARRISH SANDRA SEWARD BETTY ROGERS WILMA BLAKEMORE

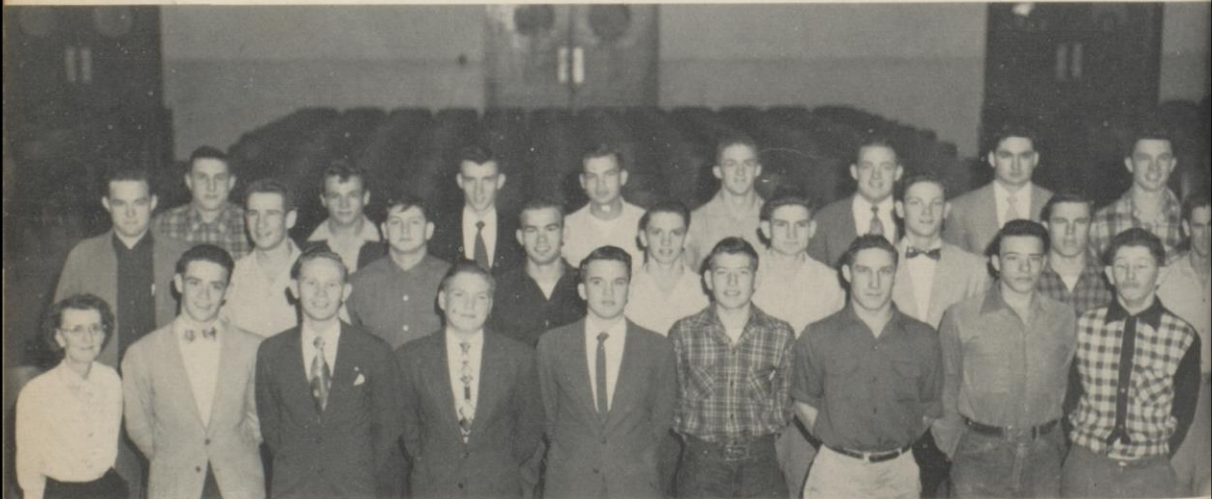


Girls' Glee Club



First row, left to right: Miss Maxwell, K. Arrington, P. Stevens, J. Walne, S. Lightcap, C. Maxwell, B. L. Rogers, M. Shannon, B. J. Pennington, P. Bagley, L. Wilkinson, H. Houston, J. Westbrook. Second row: P. Hutto, B. Wood, B. Hollowell, P. Darrington, N. Livingston, M. Dunn, S. Wilcher, J. Peterman, M. G. Rogers, F. Black, P. Graham, C. Middleton, C. J. Nally. Third row: B. Taylor, B. Parker, F. Scroggins, E. McGinty, L. Jenkins, D. Moody, M. Bennett, R. Kelly, R. Early, J. Houston. Fourth row: R. McCain, P. Wilkinson, M. Lawrence, E. Porter, B. Buxton, P. Shackleford, M. Carley, P. Bentley, N. Hutto, N. Simmons, J. Wood. Fifth row: M. Stewart, F. Harthcock, S. Miller, I. Allen, M. Beers, B. Farrish, B. Wilkins, L. Salter, J. Roberts, S. Foster.

Boys' Glee Club



First row, left to right: Miss Maxwell, D. Rogers, C. Ward, M. Johnson, J. Neeld, W. Harrison, J. Cox, B. Weber, H. Clardy. Second row: J. Fulgham, S. Liddon, K. Fullilove, J. Carpenter, M. Coody, B. Coleman, H. Johnson, D. Stain, B. Kennedy. Third row: A. P. Kelly, D. Morgan, B. Strickland, J. Carpenter, R. Roby, S. Bonney, S. Evens, N. Guthrie.

Mixed Glee Club

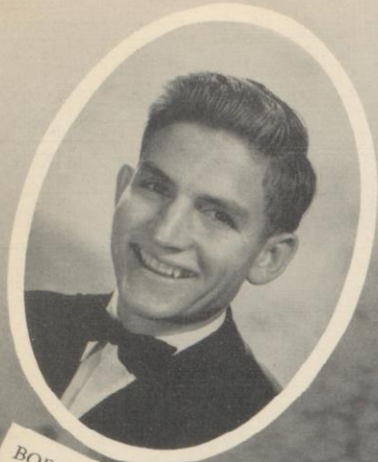


First row, left to right: Miss Maxwell, J. Westbrook, M. Beers, B. Wood, B. L. Rogers, D. Cooper, P. Bagley, L. F. Wilkinson, R. Kelly. Second row: L. Salter, S. King, P. Wilkinson, H. Johnson, N. Guthrie, M. Johnson, C. Ward, C. J. Nally, F. Black, J. Houston. Third row: C. Arrington, D. Moody, J. Peterman, C. Plunkett, M. G. Ingram, D. Morgan, B. Weber, J. Cox, E. J. North, H. Houston, S. Lightcap. Fourth row: C. Waller, M. Bennett, R. Nowlin, A. P. Kelly, B. Coleman, B. Kennedy, S. Evans, D. Rogers, M. G. Rogers, S. Grayson. Fifth row: S. Wilcher, B. J. Pennington, M. Shannon, M. Dunn, F. Green, F. R. Harthcock, C. Cline, M. Hendrix.

Girls Sextet



Left to right: Ruth Kelly, Lois Faye Wilkinson, Pat Bagley, Marilyn Beers, Billie Jo Pennington, Martha Shannon.



BOBBY COLEMAN



JAMES FULGHAM

Co-Captains

Football '52



Assistant Coach
HAROLD KELLY



Head Coach
DOUG HAMLEY



1952 Season in Review

As the highlights of another football career fade into the past, and the smoke of conflict clears, then can the merits and greatness of a football squad be calculated.

Yazoo City High's 1952 squad, without a doubt, is the greatest in the history of local grid aggregations.

The Indians of Coach Doug Hamley and Harold Kelly compiled an outstanding, long to be remembered 11-0 record. Along with the undefeated season the Chiefs garnered the Delta Valley Conference Championship and the District Six Title.

To boast this unmarred record, the Red and Black victimized teams from Batesville, Drew, Indianola, Belzoni, Cleveland, Crystal Springs, Vicksburg, Kosciusko, Charleston, and Grenada, in that order.

The most important victory came to the Tribesmen in the Thanksgiving Turkey Day tilt with their perennial foe from Canton. In this all-out effort the aggregation took the District 6 crown.

The offensive power of the split-T exemplified by the point totals for the season—339 to the opposition's 54. Besides ranking as one of the top high school teams of the state, they placed Doc Fulgham, Sonney Bonney, Bo Collins, and Rex Nowlin on the all DVC team. Bobby Coleman and Sim Liddon garnered positions on the second team and Roy Roby was hailed honorable mention.

The '52 roster included 37 players: 16 seniors, 15 juniors, 5 sophomores, and 1 frosh. Graduating lettermen are: Cox, Coody, Kelly, Carpenter, Guthrie, Fullilove, Stain, Nowlin, Liddon, Coleman, Roby, Evans, and Collins.

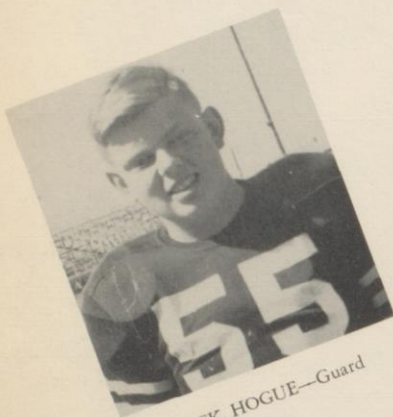


SCHEDULE

Yazoo City.....	21	Batesville	0
Yazoo City.....	27	Drew	6
Yazoo City.....	19	Indianola	12
Yazoo City.....	45	Belzoni	12
Yazoo City.....	31	Cleveland	0
Yazoo City.....	27	Crystal Springs	6
Yazoo City.....	41	Vicksburg	0
Yazoo City.....	40	Kosciusko	6
Yazoo City.....	34	Charleston	0
Yazoo City.....	21	Grenada	0
Yazoo City.....	33	Canton	12



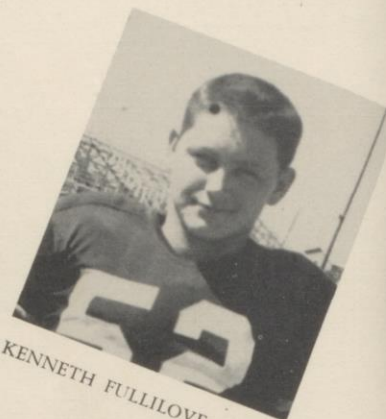
ROY ROBY—End



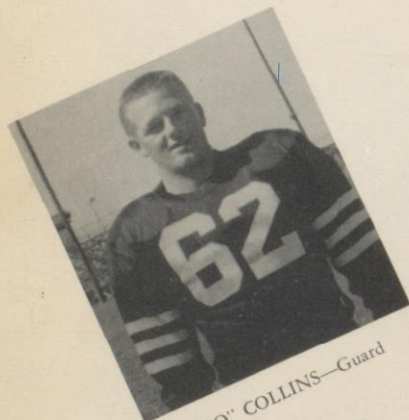
JACK HOGUE—Guard



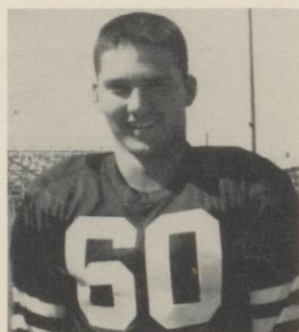
NOEL GUTHRIE—End



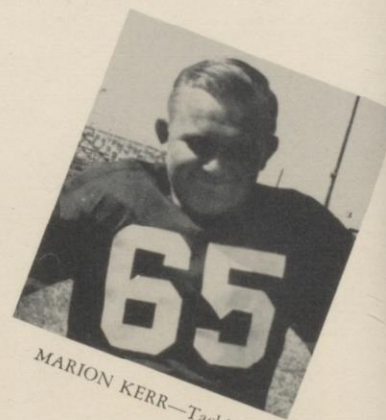
KENNETH FULLILOVE—Tackle



"BO" COLLINS—Guard



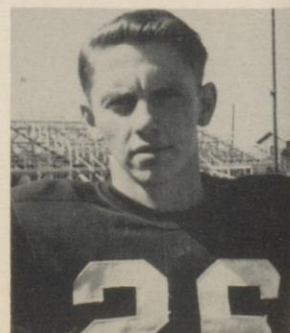
STANLEY EVANS—Tackle



MARION KERR—Tackle



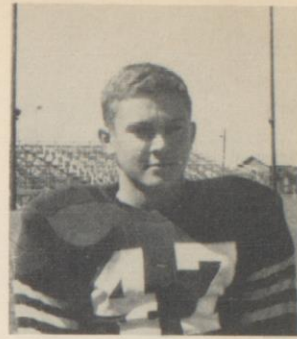
JAMES COX—Halfback



MARION COODY—End



THE STARTING ELEVEN seen during a workout on the practice field in their practice togs.



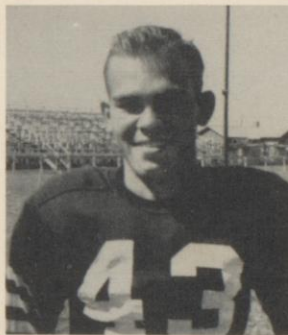
REX NOWLIN—Halfback



SANDERS POWELL—End



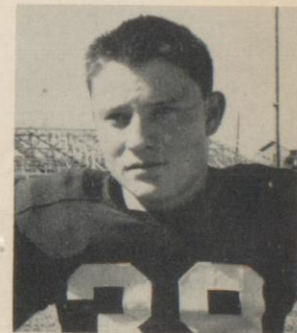
HOWARD CLARDY—Halfback



JAMES CARPENTER—Guard



HUGH PICKETT—Fullback



WEBB COMOLA—Fullback

STRUGGLING for extra yards Liddon is finally stopped by a Canton secondary defender. Indians took this one at Crump Stadium, 33-12, to complete the undefeated season.

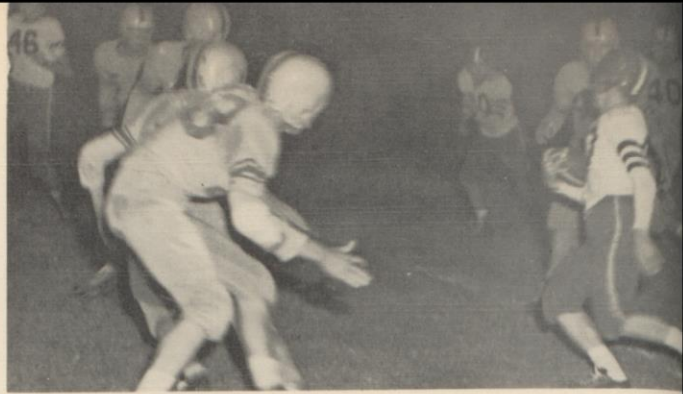


JESSE PIGG—Halfback

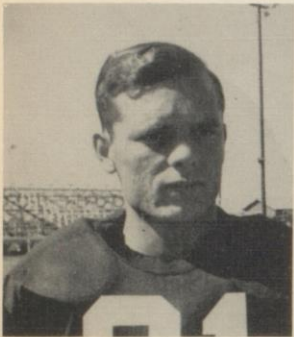




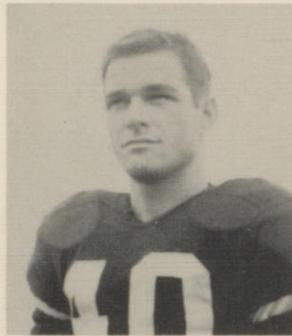
BOBBY COLEMAN—Quarterback



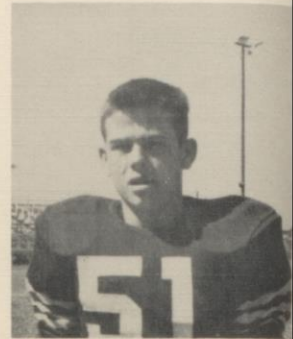
BOBBY COLEMAN, Redskin field general, executes a keep play to advance deep into enemy territory.



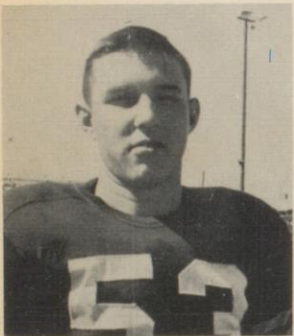
JOE COLLINS—Guard



"DOC" FULGHAM—Center



JAMES HOLDERFIELD—End

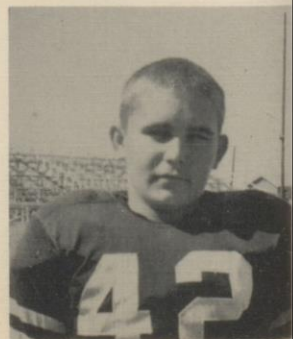


A. P. KELLY—Tackle



DOUG STAIN—Guard

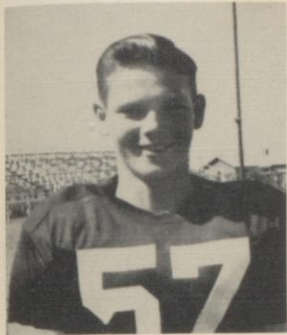
IT'S UP and good as Noel Guthrie, extra point artist for the Indians, placed the ball between the uprights in the Canton tilt.



RONNIE SMITH—Center



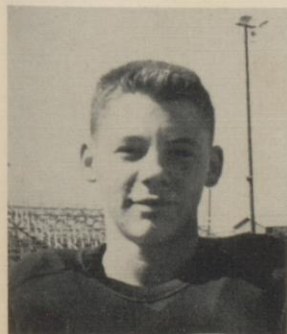
STONE WALL is met by Sim Liddon (56), Indian ball carrier, as defense tightens to nullify a gain.



HANS JOHNSON—End



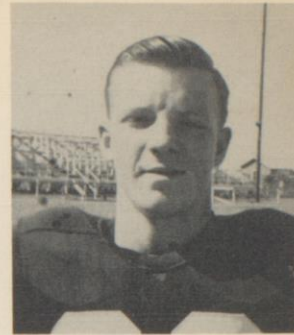
DICK MORGAN—Fullback



JIMMIE GRIFFIS—Guard



JOHN CARPENTER—Tackle



JON REEVES—Halfback



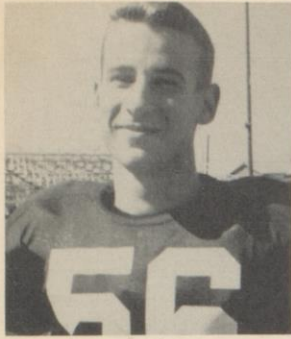
SIDNEY FLETCHER—Halfback



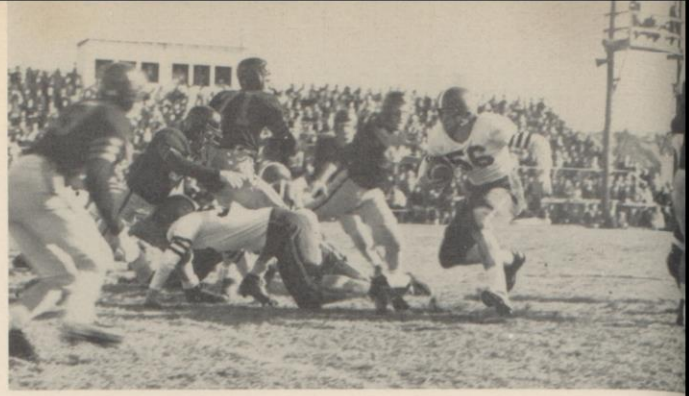
BUBBER TRAMMEL—Halfback

ACTION below occurred in Ya-zoo-Canton tilt. Left half Bubba Trammell skirts end before met by enemy Panthers.

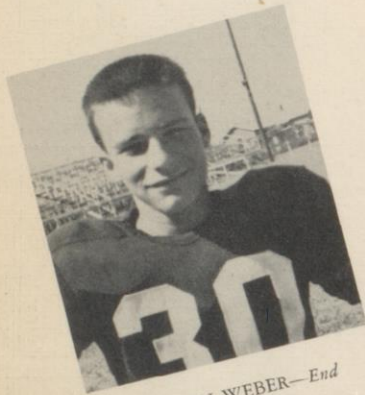




SAM LIDDON—*Fullback*



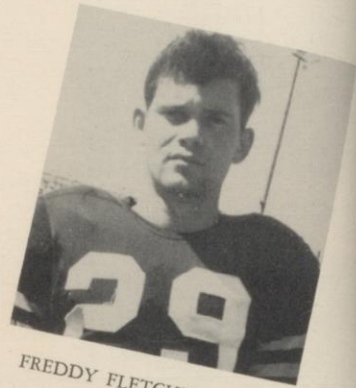
SIM LIDDON, rugged Indian fullback finds a gap in the Canton forward wall for a substantial gain.



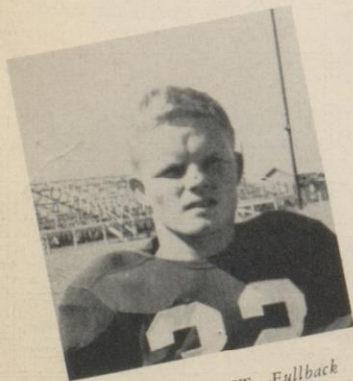
BOWMAN WEBER—*End*



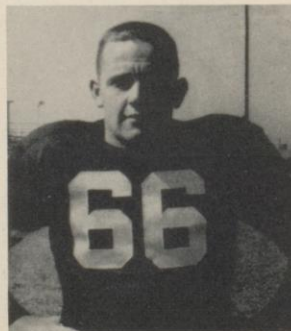
BOBBY KENNEDY—*Halfback*



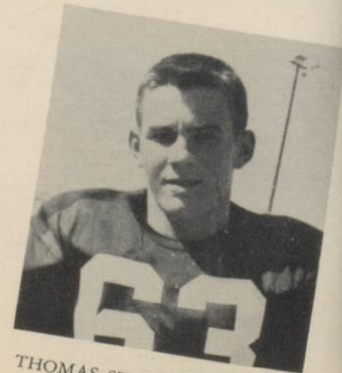
FREDDY FLETCHER—*Center*



DANNY LUCKET—*Fullback*



HENERY BONNEY—*Tackle*



THOMAS STRICKLIN—*Guard*

Basketball
1953



Boys' Basketball



First row, left to right: Bobby Coleman, Bobby Kennedy, Rex Nowlin, Jimmie Griffis, Bob Park, and Bubba Coody. Second row: Coach Kelly, Sim Liddon, John Carpenter, Sanders Powell, Raymond Adams, Hans Johnson, Alvin Waller, and Manager Howard Fulgham.

BOYS' BASKETBALL 1952-'53

Coach Harold Kelly's Yazoo Indians, to this point in the season, hold a 11-6, .647 per cent record, and are preparing for the forthcoming District 6 A-AA tournament.

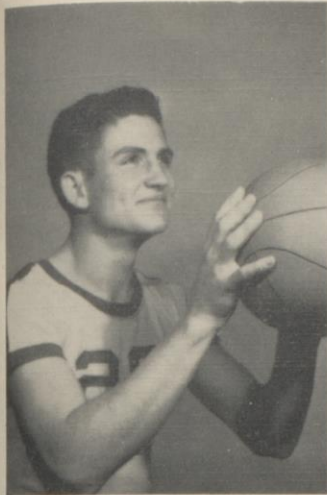
The "Ten Little Indians" main objective has been to overcome the lack of height, having only one starter over six feet. By substituting hard work, sportsmanship, and teamwork, they have overcome this hardship and remained with the ever dangerous teams of the state. The Redskins have dealt losses to Belzoni, Benton, Bentonia, Canton, and Silver City twice, and a lone defeat to Sartartia, while absorbing defeats from Clinton on two occasions, Forest Hill, Sartartia, Greenwood, and West Talahatchie.

In the Delta Valley Conference match the Chiefs fell before W.T.H.S. in the opener by the slim margin of three points. Guard Bobby Kennedy was the sole placement on the All D.V.C. squad.

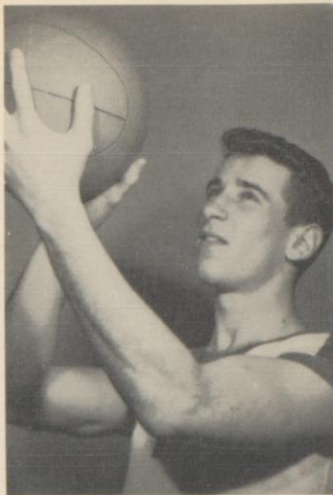
In the individual spotlight, "Big" John Carpenter and Bobby Kennedy, have been the point pacers. Rex Nowlin, Bobby Coleman, and Sim Liddon round out the starting five.

Regional, South Mississippi, and State competition are slated beyond our deadline; therefore results are not obtainable.

Indian



BOBBY COLEMAN

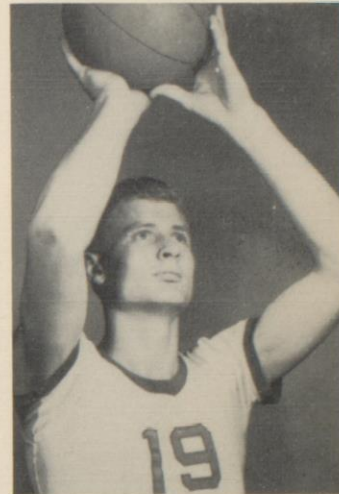


SIM LIDDON

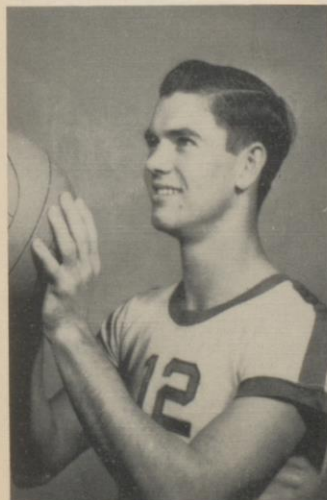


COACH KELLY

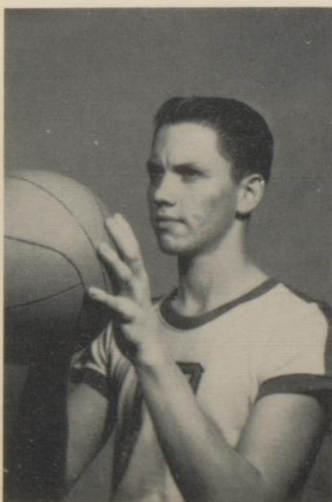
Roster



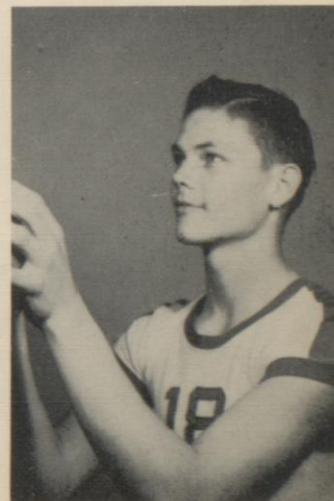
SANDERS POWELL



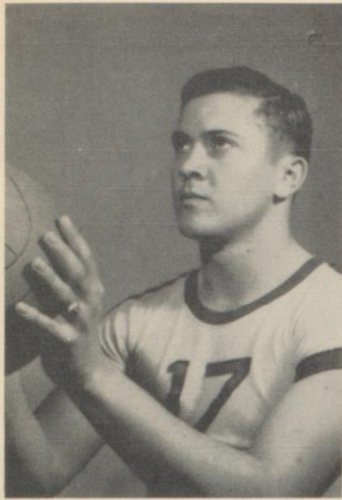
BOBBY KENNEDY



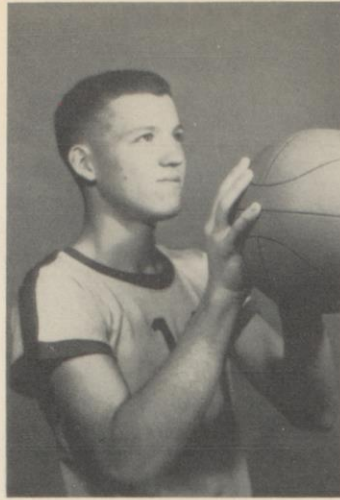
MARION COODY



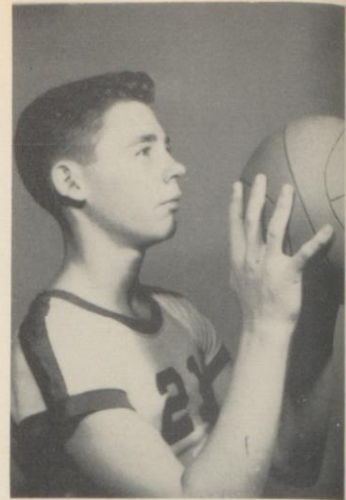
HANS JOHNSON



REX NOWLIN

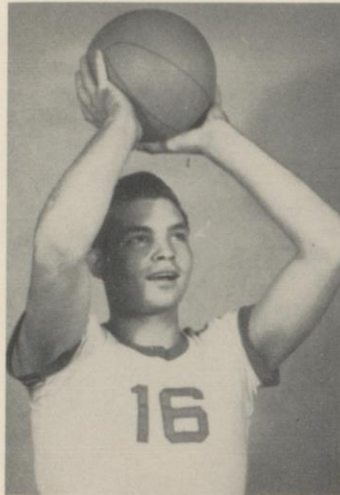


BOB PARK



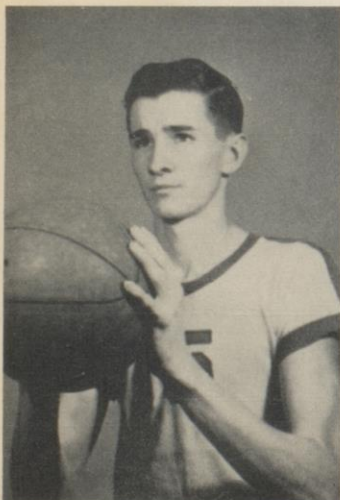
JIMMIE GRIFFIS

Indian



JOHN CARPENTER

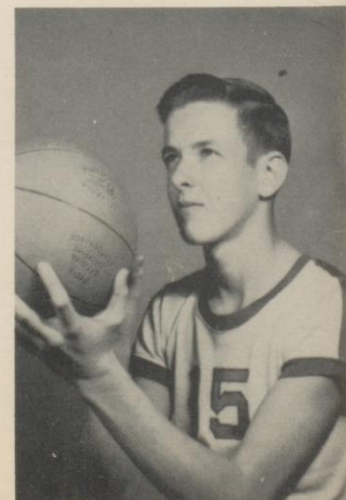
Roster



RAYMOND ADAMS



FLOYD TRAMMELL



ALVIN WALLER

Girls' Basketball



Front row: Bobbie Burns, Jo Ann Weston, Doris Broom, Hazel Houston, Eva Rose Hopkins, Patsy Hutto. Second row: Mary Ingram, Nancy Hutto, Irene Williams, Pearl Williams, Sherry Terrell, Virginia Trammell, Dolly Johnson, Barbara Cline. Third row: Coach Hester, Betty Rogers, Alta Fay Adams, Peggy Wilkinson, Doris Shackelford, Nancy Shackelford, Barbara Stricklin, Biggie Wilkins, Dorothy Coleman, Coach Rush.

GIRLS' BASKETBALL 1952-'53

Coaches Hester and Rush, prolonging the tradition of producing one of the more dangerous teams here in our Southland, have again established an aggregation of adept girl cagers. The sextets have fallen heir to one of the greater basketball records here in the heart of Dixie. To this point in the season they maintained a respectable 10-6 record.

Stunned by the loss of five graduating starters, which included All-Staters Barbara Garrett and Rubye Smith, the Indianettes have toppled Bentonia, Benton, and Silver City on two occasions, while defeating Belzoni, Canton, Sartartia, and Charleston for single victories. Defeat has been absorbed from Clinton twice, Belzoni, Canton, Sartartia, and Batesville once each.

The team, plagued by injuries thus far have been unable to build a standard combination. Doris Shackelford, 'Nettes pivot forward, holds the limelight in the scoring column.

Results of the forthcoming tourneys are not available at our deadline.



DOLLY JOHNSON



PEGGY WILKINSON



BARBARA STRICKLIN



PATSY HUTTO

Indianette



MARGARET HESTER



SABIN RUSH

Roster



DOTSY COLMAN



BARBARA CLINE



ALTA FAYE ADAMS



NANCY HUTTO



BETTY RODGERS



"BIGGIE" WILKINS



EVA HOPKINS



MARY INGRAM



BOBBIE BURNS



VIRGINIA TRAMMELL



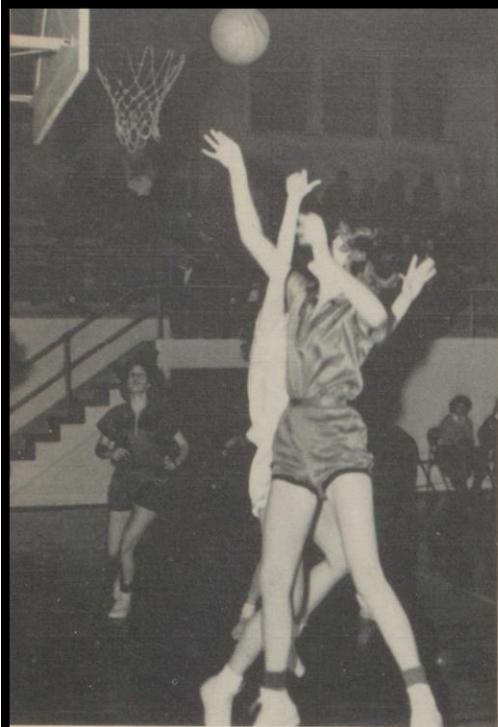
D. SHACKELFORD



DORIS BROOM



N. SHACKELFORD



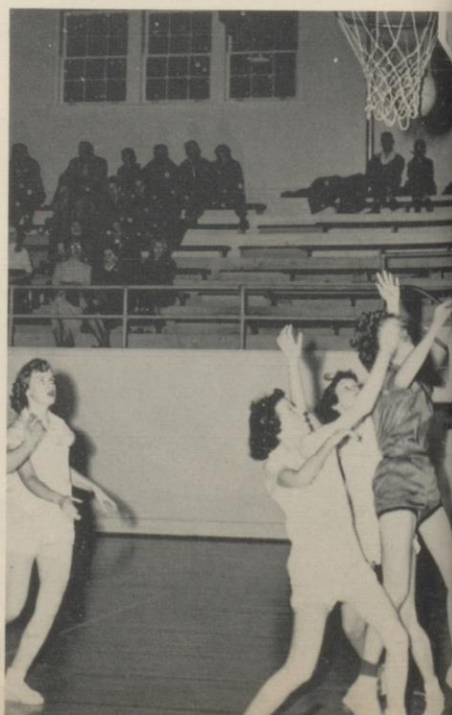
Doris Shackelford (above) is shown sinking a one-handed attempt in the Yazoo-Clinton skirmish.



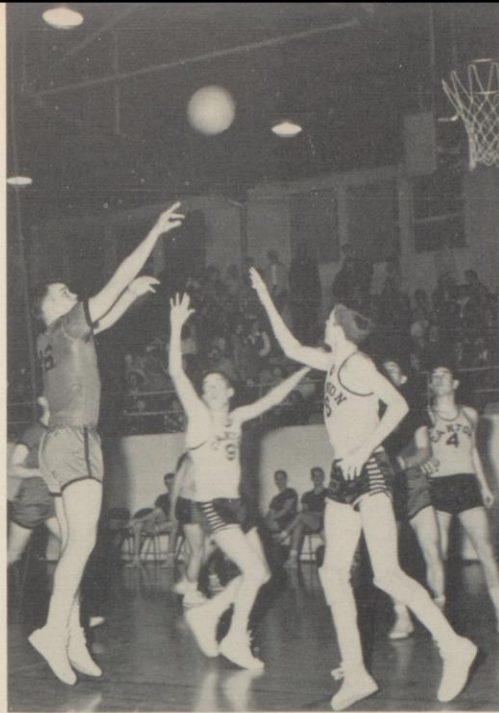
Dot Coleman (above) sinks a lay up shot despite a foul by the Canton guard close by.

RECORD

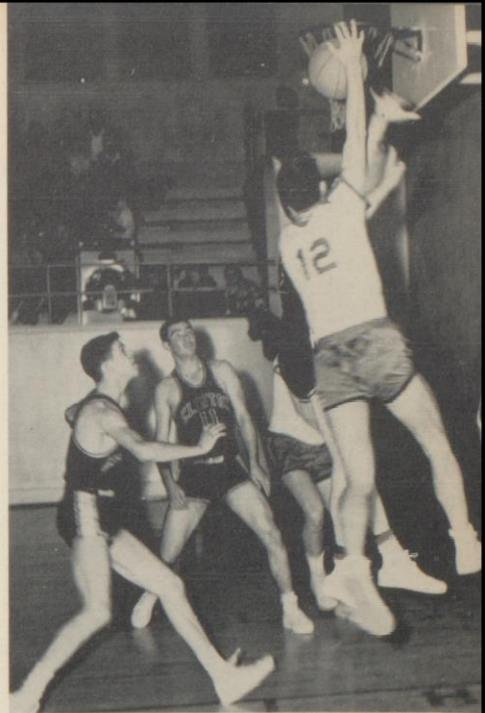
Yazoo City.....	41	Belzoni	39
Yazoo City.....	26	Clinton	43
Yazoo City.....	61	Bentonia	24
Yazoo City.....	40	Benton	43
Yazoo City.....	51	Canton	35
Yazoo City.....	34	Satartia	38
Yazoo City.....	35	Satartia	27
Yazoo City.....	27	Clinton	30
Yazoo City.....	48	Silver City	32
Yazoo City.....	47	Silver City	35
Yazoo City.....	34	Canton	39
Yazoo City.....	40	Charleston	35
Yazoo City.....	39	Batesville	49
Yazoo City.....	33	Bentonia	25
Yazoo City.....	22	Belzonia	23



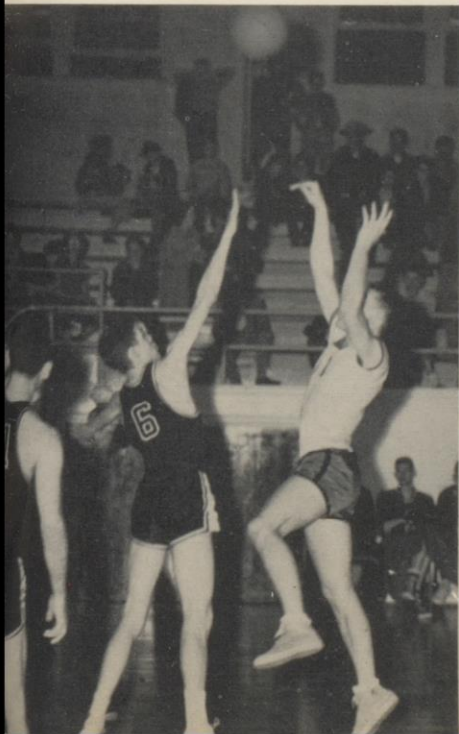
Doris Shackelford (right) attempts a field goal under the basket despite close guarding. Ball is seen behind the net.



"Big" John Carpenter, Yazoo center racks a one-hander in the Canton battle.



Bobby Kennedy (above), high scoring Indian guard, attempts a one-handed push shot from the side. Clinton defender behind Kennedy blocked the shot.



Forward Sim Liddon manipulates a one-hander that goes for a tally in the Clinton skirmish.

RECORD

Yazoo City.....	51	Belzoni	20
Yazoo City.....	22	Clinton	58
Yazoo City.....	39	Forest Hill	57
Yazoo City.....	47	Bentonia	30
Yazoo City.....	42	Benton	18
Yazoo City.....	41	Canton	32
Yazoo City.....	39	Sartartia	40
Yazoo City.....	68	Sartartia	56
Yazoo City.....	23	Greenwood	44
Yazoo City.....	37	Clinton	55
Yazoo City.....	49	Silver City	39
Yazoo City.....	54	Silver City	23
Yazoo City.....	64	Canton	42
Yazoo City.....	37	West Tallahatchie	40
Yazoo City.....	52	Bentonia	37
Yazoo City.....	41	Belzonia	33
Yazoo City.....	58	Benton	43

Baseball 1952



First row, left to right: Jimmie Griffis, Billy Kennedy, James Roberts, J. B. Barrett, Lulu Powell, Charles Walker, Managers. Second row: William Milner, Bobby Coleman, Bobby Kennedy, Billy Sheperd, Willie Morris, Hans Johnson. Third row: "Doc" Fulgham, Sonny Bonney, Freddie Fletcher, Milton Hale, Casey Cagle, Rex Nowlin, Coach Harold Kelly.

BASEBALL 1952

Head mentor Harold Kelly's baseball Indians improved their previous '51 showing by terminating the regular 10 game schedule with a 4 won and 6 lost record.

Yazoo's four victories were garnered at the expense of Flora twice, Bentonia, and Canton. Defeat was absorbed through the hands of Sartartia twice, Benton on two occasions, Canton once and Bentonia once.

Bobby Kennedy, agile Redskin shortstop, captured the team batting crown and trophy by pounding out a .452 clip. Bobby Coleman and Willie Morris gained runner-up slots by posting .360 each. Pitcher Clarence Cagle finished third with a .308 average.

Other individual leaders in the various departments were Bobby Coleman with the most stolen bases (8), Bobby Kennedy with the most runs (11), and hits (14), and Willie Morris with the most walks. Catcher Sonny Bonney collected the most strike outs and Cagle delivering 60 whiffs in the 10-duel slate finished with a 4-6 showing.

Graduating lettermen were: "Red" Milner, "Muttonhead" Shepherd, and Willie Morris. Returning lettermen are: Fulgham, Bonney, Fletcher, Cagle, Nowlin, Coleman, Kennedy, Griffis, Kennedy, and Roberts.

Track 1952



First row, left to right: Marion Coody, Bowman Weber, Frances Adcock, Eva Coleman, Barbara Ann Stricklin, Merry Mac Terrell, Janet Wood, Donald Roberts, Will Holmes, James Cox. Second row: Sanders Powell, Bruce Johnston, Dick Morgan, Roy Roby, Raymond Adams, Webb Comola, Sidney Fletcher, Noel Guthrie.

TRACK 1952

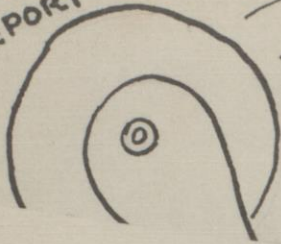
Coach Oscar Buchannan's local tracksters closed out the '52 track season with a noticeable record. The team captured first place honors in a tri-school practice meet at Canton, third place in the Delta Valley Conference, and third place in the District 6 affair behind Clinton and Jackson.

Representatives in the South Mississippi meet were Billy Rhodes, Robert Pugh, and Barbara Ann Stricklin. Rhodes participated in the 100 yard dash after capturing first place in the District. Robert Pugh entered the shot put and high jump after second first place District ribbons. Barbara Stricklin, sole girl entrant, captured broad jump laurels to enter the South competition. The trio was eliminated before advancing to state action.

TEACHERS

CARD

REPORT





*If you hear teachers sigh,
It's because of Junior High*

8-A



First row, left to right: Brown Lawson, Donald Melton, Buck Harris, Sherry Kerr, Gerald Adcock, Bobby J. Bailey, Betty Kay Cline, John Berberette, Dorothy Dozier. Second row: Phyllis Mapes, Marjorie Jones, Beverly Foster, Alice Balilock, Billy Adams, Elton Nichols, Muzette Howard.

Third row: Patricia Frederick, Maxine Russell, Dan Pugh, Annelle Foster, Janie Fletcher, Buddy Moses, Billy Coker, Mrs. Lester. Fourth row: Peggy Posey, Rita Mood, Jimmy Veazey, Hazel Baynes, Opal Murphy, Shirley Rusche, Harlene Beard, Phillip Newton.

8-B



First row, left to right: Kelly Collins, Betty Lightcap, George Sigrest, Charles Reynolds, Ronnie Fraiser, Roy Carpenter, Aubrey Eiland, Patricia Fanning. Second row: Carole Keith, Glenda Terry, Eva Coleman, Joan Luster, Gene Pope, William Porter, Letty L. Kinard, Helen F. Harrison.

Third row: Johnie Nesbit, Eve Bennett, Josephine Roby, Marion Falkner, B. Barrier, Ronnie Werby, Gloria Downey, Miss Crabb. Third row: Alice Jones, Fannie Williams, Sylvia Smith, David Milner, Ann Darrington, Van Roberts, Harold Chisholm, Edward Quinn.

8-C



First row, left to right: Nina Adams, Malcolm Moody, Gary Waller, Vickie Russell, Mary L. Stubblefield, Sylvia Singleton, Jim Bagley, Donald Houston. Second row: Hughlene Jones, Carroll Hodges, Linda Jones, Martha Brister, Rosemary Hester, Margarita Morris, John Shipp, Sidney Ferguson. Third row: Mary Mac Terrell, Virginia Law-

rence, Marilyn Sue Osborn, Joan Coker, Beth Hammons, Patti A. Russell, Marilyn Mills, Roy Ruby, Mrs. Morgan. Fourth row: Georgia Middleton, Ann Neely, Betty C. Johnson, Frances Stain, Sandra Bartley, Gilbert Monell, Sam Houston, Ida Nell Fisher, Leon Paschal.

7-A



First row, left to right: Jesse Nelson, Joe Manor, Rodney Claburn, Billy Jo Quinn, John York, Evelyn Christopher, Jo Ann Shannon, Wallis Griffis, Fred Norman. Second row: Wallace Walker, Clay Wester, Laverne Collins, Billy Croysdale, Louise Oldham, Faye Newton, James Taylor, Danny Loflin, Billy Rogers. Third row: Bobby Newton,

Ethel Wilson, Mildred Stonestreet, Clara Warren, Bonnie Scott, Terry Woodard, Johnny Posey, Harold Moody. Fourth row: Joyce Turner, Flora Boyd, Silas Zigler, Alton Colling, Jeff Hall, William Powell, Shirley Hawkins, Alice Melton.

7-B



First row, left to right: Thomas Berberette, Kenneth Montgomery, Carol Keith, Jimmie Shirly, Martha Stephen, Patsy Harvey, Nan Hitt, Mary Ann Vancleave, Mona Shipp, Bobbie Evans. Second row: Ernest Evans, Betty Ward, Jack Cannon, Martha Brock, Rose Matthews, Ginger Barnes, Gloria Lanoux, Scarlett Jones, Joan Carley. Third row: Ann

Manor, Charlotte Holderfield, Beverly Parks, Harold Simons, Donald Brooks, Alice Fay Kinard, Betty Wright, Miss Touchstone. Fourth row: Judy Simpson, Rheadon Early, Hugh Mitchell, Ed Boilz, Frances Parker, Dorothy Rogers, Vivian Bliss, Charlotte Griffin.

7-C



First row, left to right: Terry Hollowell, Chris Cleveland, Morris Richards, Joe Dongieux, Gloria Harrison, Mary Alice Harrison, John Middleton, Martha Seward. Second row: William Barbour, Clarence Collins, Bettye West, Dalton Moultrie, Edwin James, Lucian Hill, Glenda Melton, Sammie Stringer, Jeppie Barbour. Third row: Billy Baird,

Barbara Coleman, Bobby Hanshaw, Leora Lee, Lucile Neeld, Willis Fowler, Mack Hawk, Miss Morgan. Fourth row: Michale Fink, Dorothy Freeman, Nancy Cooper, Love Henick, Martha L. Stancill, Carolyn Finley, Lillian Smith, Linda Little, Eugène Davenport.

Girls' 4-H Club



First row: Judy Simpson, Rheadon Early, Rose Mathews, Bonny Scott, Evelyn Christopher, Louise Oldham, Annele Foster. Second row: Nancy Cooper, Nan Hitt, Betty West, Glenda Melton, Patsy Harry, Charlotte Holderfield, Mary Ann Vancleave, Gloria Ann Vancleave, Gloria Ann Lenoe, Betty Ward, Patsy Fanning, Harolene Beard. Third row: Dorothy Freeman, Margie Jones, Janie Fletcher, Beverly

Foster, Dorothy Dozier, Manette Howard, Betty Kay Cline, Faye Harrison, Mildred Stonestreet. Fourth row: Sherry Kerr, Maxine Russell, Patricia Alice Jones, Eva Bennett, Gloria Pope, Joan Susten, Eva Coleman, Charlotte Griffen. Fifth row: Peggy Posey, Joyce Turner, F. G. Boyd, Fanny Williams, S. Hawkins, Hazel Banes, Opao Murphy, S. Roushe.

Boys' 4-H Club



First, row left to right: Sonny Porter, Chris Cleveland, Morris Richards, James Taylor, Allen Kieth, Ronnie Frasier, Bobby Jo Barley, Wallis Griffis, Fred Norman, Billy Baird. Second row: A. Isle, R. Carpenter, C. Renolds, J. Adcock, W. Barbour, J. Boaez, W. Fowler, B. Adams,

J. Berberette. Third row: A. Nicholi, D. Pugh, B. Lawson, J. Moses, K. Collins, G. Pope, V. Roberts, M. Hawks; Coker, Vesely, Milner, Chisom, Newton, Davenport, Quinn, Ziglar.

Junior High Dramatics



First row: G. Melton, G. Lanoux, B. Lightcap, B. Harris, M. Ship, J. Middleton, M. Vancleave, D. Houston, P. Fanning, S. Stringer. Second row: B. Coleman, G. Terry, G. Harrison, M. Brock, B. Adams, S. Jones, J. Carley, B. Kay

Cline, M. Howard. Third row: L. Neeld, Marilyn Mills, A. Jones, L. Love Keith, M. Seward, Miss Touchstone. Fourth row: B. Claire Johnson, C. Finley, I. Nell Fisher, S. Smith, D. Milner, S. Houston, F. Parker, C. Griffin.

Junior High - Y



First row: L. Collins, T. Hollowell, R. Claburn, B. Hoe Quinn, H. Simmons, B. Joe Bailey, D. Loflin. Second row: D. Melton, L. Hill, C. Manor, C. Cleveland, J. Shirley, J. Dongieux, E. James, J. York, J. Taylor, T. Woodard, A. Eiland, M. Richards. Third row: D. Brooks, D. Moultrie, B. Croysdale, K. Montgomery, J. Cannon, J. Shipp, R. Carpenter, A. Keith, R. Frasier, J. Posey, W. Barbour, W. Griffis, B. Adams, F. Norman, H. Moddy. Fourth row: C.

Wester, W. Walker, B. Newton, B. Evans, E. Evans, B. Henshaw, C. Reynolds, G. Adcock, J. Berberette, V. Roberts, G. Pope, W. Fowler, W. Porter, B. Baird. Fifth row: G. Sigrest, D. Pugh, B. J. Barrier, M. Faulkner, B. Lawson, B. Moses, K. Collins, R. Werby, J. Barbour, M. Hawks, W. Powell, B. Rogers. Sixth row: E. Nichols, J. Veasey, D. Milner, H. Chisholm, A. Collins, P. Newton, E. Bailey, H. Mitchell, J. Hall, E. Davenport, E. Quinn, S. Zigler.

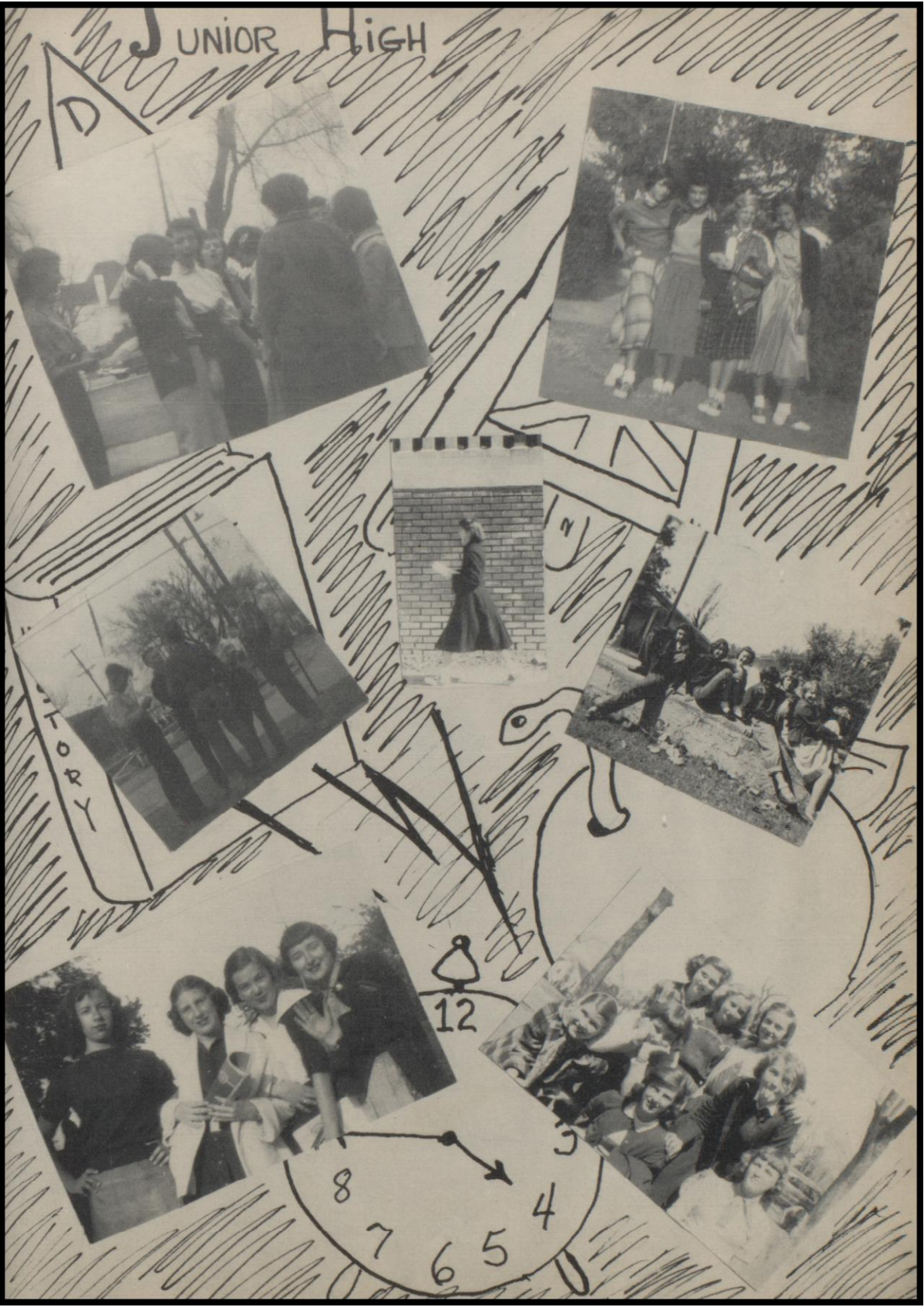
Fresh
Little
Fishes



On The Campus



JUNIOR HIGH



STORY

12

8

7

6

5

4

3

Jimmy Neeld



Miriam
Hampshire

Beryl King

APPRECIATION to ADVERTISERS

September 1952, was the beginning of another school year and all of the many activities on Yazoo High School campus were in full swing, one of these being the Business Staff of our favorite book, MINGO CHITO. This staff was hurriedly called into session so that we could skillfully and successfully outwit others by getting our ads in first. The Business Manager, with concealed worry, hopefully forced into the hand of each member of the staff the names of the concerns to contact. Much to their amazement and joy, the advertisers almost seemed glad to see them. It is to these people, our friends and business associates, whom we bother and worry, that we wish to express our many thanks and deep felt appreciation for their patience and cooperation in making our MINGO CHITO possible and the success for which we had hoped.

Shelley Lightfoot

Sherry Ferris

Joan Lee Kean

We certainly hope that as you look at the different members of the 1953 Graduating Class who smile at you from the pages of the advertising section that it will bring to you as much pleasure as it did to them to model for your ad.

Flora Green
Jimmie Triffis

Nasha Denn
G P

Sim C. Hodson

Miss So Ann Pegram Sr.
Mrs. A. P. Scott Sr.



Linda Salter

Kenneth Fullilove

Flora Green



OLDSMOBILE

Only Surpassed By
CADILLAC

"Standard of the World"

CLANTON & SEWARD MOTOR
CO.

Norman's

Lunch Counter
Short Orders

Delicia

ICE CREAM CO.

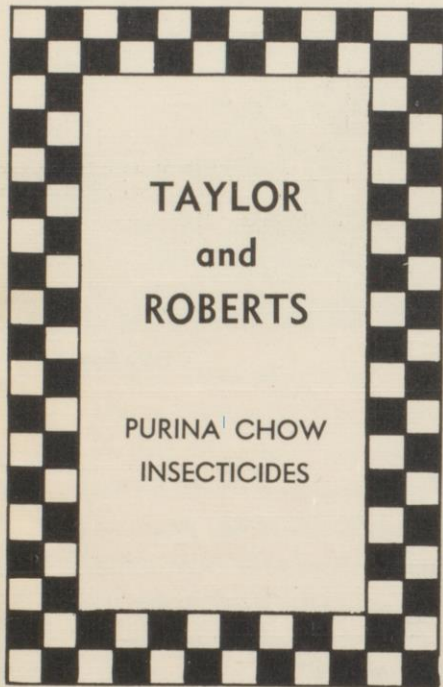
"All Orders are Appreciated"

Compliments

of

**BRISTER'S
FOOD STORES**

"DON'T GO BY—COME BUY"



**TAYLOR
and
ROBERTS**

PURINA CHOW
INSECTICIDES

**SUPERIOR
Lumber Co.**

MOUND and POWELL STREETS
YAZOO CITY, MISSISSIPPI

"WE SERVE WITH PRIDE"

**PHYSICIANS & SURGEONS
PHARMACY**

"The Prescription Center"
CITY-WIDE DELIVERY SERVICE

201 N. Main Street

Phone 52

STEWART CLEANERS

109 Jefferson St.
PHONE 800



A&P Store & Market
116 S. Main

**Ingram's
SHOE STORE**

"SHOES FOR THE
ENTIRE FAMILY"

Yazoo City, Mississippi
RED GOOSE, ACROBAT and GREAT
SCOTT SHOES for CHILDREN

**Livingston
INSURANCE
AGENCY**

Student—Accident
Insurance

**LAMAR HOTEL
Building**

Phone 442

HASSIN'S

FAMILY OUTFITTERS
121 W. Broadway

Compliments of
**STANDARD OIL
COMPANY**
Ross Turner

Compliments of
Delta
NATIONAL BANK

YAZOO CITY, MISS.
Capitol & Surplus \$750,000,000
MEMBER FEDERAL RESERVE SYSTEM
MEMBER FEDERAL DEPOSIT INSURANCE CORPORATION

YAZOO
HARDWARE CO.

"Trade With Us—
We Try to Please."

PHONE 209

THE
WESTERN
AUTO

Associate Store

222 S. MAIN

PH. 888

Home Laundry
Service

"WE WASH CLOTHES CLEAN"

Mr. and Mrs. T. W. Linville

WET WASH and DRY

Phone 1069

PRESCRIPTIONS FILLED

Your Dependable
Druggist
SODA—DRUGS
and DRUG SUNDRIES
WALGREEN AGENCY
DOROTHY GRAY COSMETICS

**Permenter
DRUGS STORE**
Prescription Specialists

PHONES 19 & 27 BROADWAY & MAIN

Weller

JEWELRY STORE

JEWELRY
GIFTS
CHINA

Shirts

Ties

Coats

D. A. SWAYZE

Compliments of
YAZOO APPAREL SHOP

Incorporated

FASHIONS
For
MEMORIES

YAZOO CITY, MISSISSIPPI

Best Wishes

Easy Pay Stores Incorporated

COMPLETE HOME FURNISHERS

You don't have to wait till you're old and gray

Tel. 1560

Yazoo City



COMPLIMENTS OF

TOWN &
COUNTRY KITCHEN

Compliments
to

CLASS
of
'53

**WISE
BROS.**

"LET YOUR GRADUATION
SHIRT BE A 'WINGS' "

**AMERICAN
STEAM
LAUNDRY**

SPECIAL DRY CLEANING

"We Clean Clothes
Clean"

**YAZOO
Furniture Co.**
Elizabeth Middleton

WHERE GOOD FURNITURE
IS NOT EXPENSIVE

**BARNWELL
and
BARBOUR**

Insurance
Since 1895
Phone 9

Thrift is a Habit that Should be Acquired
Early in Life

We Invite You to Open a Savings Account
With Our Bank Now

**BANK OF
YAZOO CITY**

Established 1876

MEMBER FEDERAL DEPOSIT INSURANCE CORPORATION

MEMBER FEDERAL RESERVE SYSTEM

It is our pleasure
to have a part in
your activities

**MORGAN'S
PHARMACY**

PRESCRIPTION DRUGGISTS

Phone 267
Yazoo City, Mississippi

Compliments of

**EXUM &
WILLIAMS**
INSURANCE

Phone 80

Compliments of
**STANDARD OIL
COMPANY**

Ross Turner

Compliments of
Forget-Me-Not
FLORIST
500 CAMPBELL AVE.—PHONE 400

Compliments of
STRICKLIN-KING
FUNERAL HOME

C. F. PLUNKETT
"the candy man"

Contact Us for
All Confections

PHONE 251
C. F. PLUNKETT
Wholesale Candy Jobber
606 JACKSON

Compliments of



JOHN DEERE
TRACTOR COMPANY
Sam Coker

PAN-AM
Petroleum
PRODUCTS
"Go Pan-Am All The Way"

Home
ICE CO.
GRAEBER BROS, Prop.
East Powell Extn.
PHONE 996

**MISSISSIPPI
BROKERAGE
COMPANY**

GEORGE MOSES
Proprietor

**DAVIS
Hardware**

SUREKOTE
Paint and Varnish

"THE CUSTOMER IS ALWAYS
RIGHT"

Phone 162

COMPLIMENTS
of
The Smoke House

Fountain's Flowers

For All Occasions
Phone 1130
511 Fifth Street
YAZOO CITY, MISSISSIPPI

Compliments of
PLANTERS
OIL MILL

Manufacturers of
COTTONSEED PRODUCTS
OWNED BY MISSISSIPPI COTTONSEED PRODUCTS CO.

Liberty
CASH

GROCERY
and
MARKET

Better Values

R. P.
Miller's

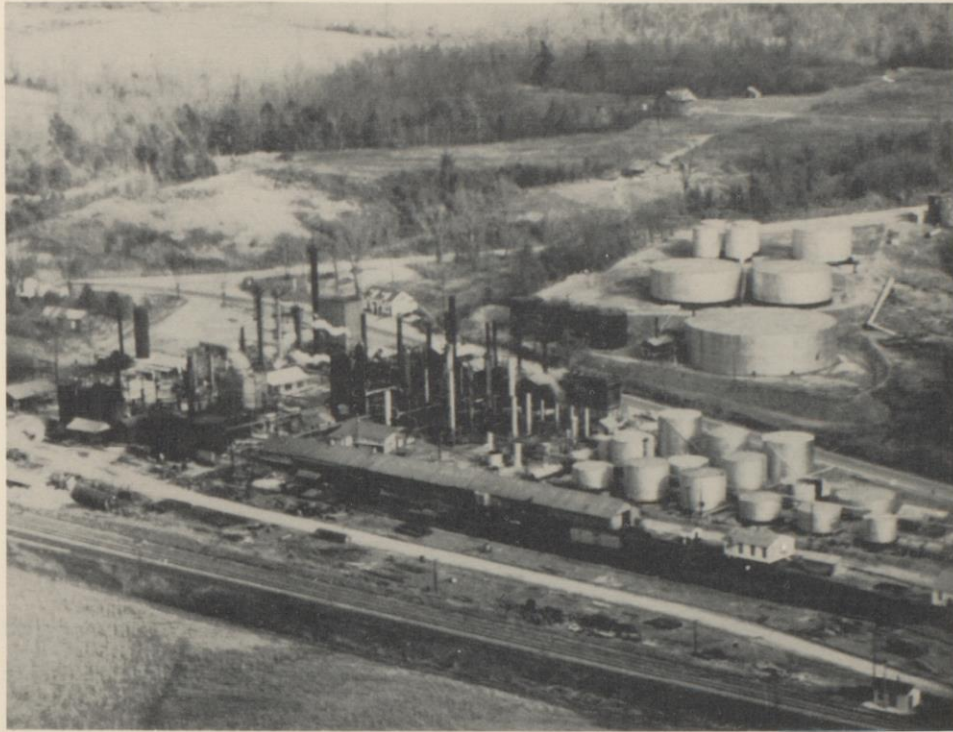
"The Ladies' Trading
Place"
Yazoo City, Miss.



R. M. MIDDLETON & SON

"Complete Home Furnishers"

TELEPHONE 130



THE SOUTHLAND COMPANY

Quality Products Manufactured from Mississippi Crude Oil

PRODUCERS—REFINERS—MARKETERS

ASPHALT SPECIALISTS

Phone 1212—Southland Bldg.

YAZOO CITY, MISSISSIPPI

Buy Your Graduation Gifts
at

**PLANTER'S
GIFT SHOP**

312 S. Main

Phone 88

BEST WISHES
from the

1953
MINGO CHITO STAFF
WE HOPE YOU LIKE
YOUR ANNUAL —
WE DO!

Miss. Division
L. G. BALFOUR CO.

Manufacturers of America's
Finest
Class Rings, Invitations,
Diplomas

H. E. ALLEN BILL PULLEN
 BOB COOK

Box 83

Jackson, Miss.

RUSSEL REALTY CO.

"Service Beyond the Contract"

F.H.A.—G.I. LOANS

TED RUSSELL, Owne.

2111½ S. Main

Call 1283

Clothes taken to
SNOW-WHITE CLEANERS
Come Back Snow-White

120 W. Commercial

Phone 10

SHAUGHNESSY'S

Self-Service

Food Store

YAZOO CITY'S MOST
COMPLETE MEAT MARKET

James Shaughnessy
Owner

Compliments of
J. A. WILLIS

Dixie Theater

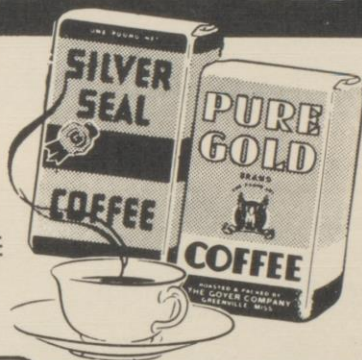
WEBER'S ECONOMY
GROCERY AND MARKET

Quality Groceries — Best Native
and Western Meats

Phone 816 - 817 Yazoo City, Miss.

COFFEE at its BEST

ROASTED CLOSE
TO HOME



GREENVILLE CLEVELAND
YAZOO CITY GREENWOOD

Compliments of
GOODLOE'S GROCERY

"Good-Low Prices"

506 S. Grand Ave.

Phone 208

The
FAMOUS STORE

"Famous for High Quality
Materials at Low Prices"

230 S. Main

Phone 128

**CASTLEMAN
OIL CO.**

Distributors of

- Shell Gasoline
- Shell Motor Oil
- Shelllubrication

211 S. WASHINGTON

Compliments of
Saxton Gardner
HARDWARE COMPANY

Yazoo City, Miss.
LET US SERVE YOU

COMPLIMENTS OF

**Mississippi
Tobacco Co.**

GET YOUR GRADUATION GIFTS
AT

CARMEN'S

207 S. Main

Phone 455

SUBSCRIBE TO
THE

**Yazoo City
HERALD**

"If It Happens
In Yazoo County
It is in the Herald"

McGraw's
SERVICE STATION

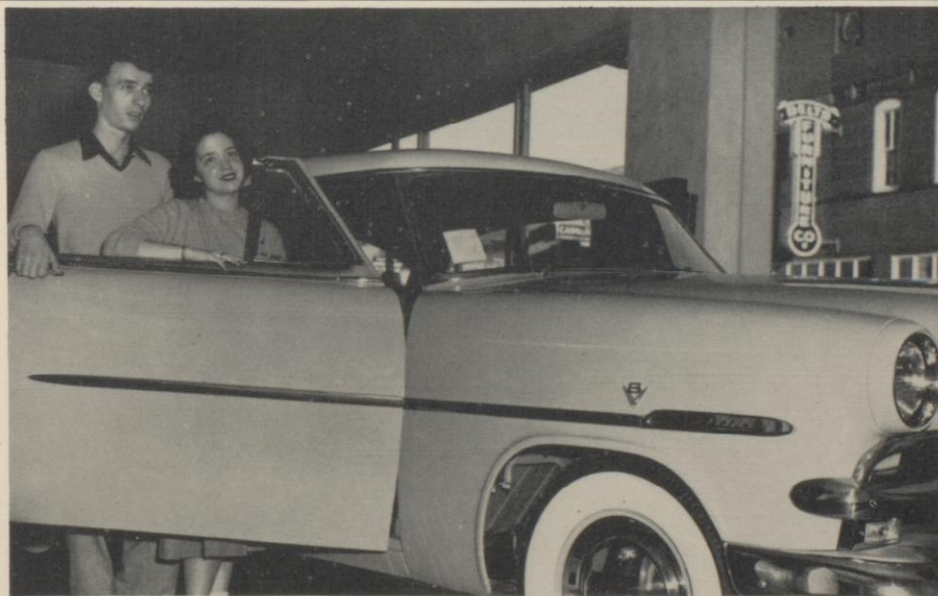
Washing—Lubrication
C. H. "TALLY" McGRAW (Prop)
Phone 360

OFFICE SUPPLIES
COMMERCIAL PRINTING



Buddy Strickland

Miriam Hendrix



You Can Pay More But You Can't Buy More!
WOLLWINE & HULL

Kenneth Edmondson
Carol Rogers

Celia Plunkett
Stanely Evans



McGRAW

CURRAN

LUMBER

COMPANY



A. P. Kelly, Jr.

Shirely Walne

Holmes-Black Motor Company
LINCOLN — MERCURY DEALER

Compliments of

Attorneys of Yazoo City

BRIDGFORTH & LOVE

ALLEN BRIDGFORTH
H. M. LOVE, JR.

HENRY & BARBOUR

W. A. HENRY
W. M. BARBOUR
HERMAN DECELL

CAMPBELL & CAMPBELL

T. H. CAMPBELL
T. H. CAMPBELL, JR.

L. J. WISE

JOHN S. HOLMES

Tea Lovers Treat



The pick
of India's famous
Darjeeling gardens.

If you cannot purchase this in your home
town—write us—P.O. Box J. S., Chicago (90)



YAZOO FURNITURE COMPANY

ELIZABETH E. MIDDLETON

"Good Furniture Need Not Be
Expensive"

Compliments of

Miron's

Yazoo County's Prestige Jewelers

102 S. Main

Telephone 1082



Kennington's

ONE OF THE SOUTH'S GREAT STORES



Bobby Coleman

Kenneth Fullilove
Noel Guthrie

Jimmy Neeld

DELTA IMPLEMENT COMPANY

A shrewd person may buy a FIELD'S OF JACKSON garment because of its long life, an observant person because of its fine tailoring and an ambitious person because she must be well dressed. They will all get what they want—and more at . . .

FIELD'S OF JACKSON

Eat at
THE
BROADWAY
GRILLE

Delicious Food Served
Inside & Out

As Autumn Leaves Fall —





Barbara Ann Stricklin

Jack Decell

YAZOO MOTOR COMPANY



TEXAS GAS AND OIL
MARFAX GREASE

Esme Jean North

James Cox

Registered
Rest Rooms

UPTON'S PLACE



Betty Rogers

Clifton Collins

Roy Roby

Marilyn Shaw

REFRESH
Drink
COCA-COLA

Support
Your
Annual

"MINGO CHITO"



Mr. Henick

Roy Roby

Charlene Waller

HENICK'S TIRE SERVICE



Douglas Stain
Martin-Senour Paints

Prudence Darrington
Lone Star Cement

COMPLIMENTS OF
HENDRIX LUMBER YARD

GULF



**Refining
Products**

COMPANY

J. A. Walne
Distributor



Rex Nowlin

Joan Jackson

Bob Rhodes
PONTIAC COMPANY

